

Workstation

LC 1000 for laser marker systems

**IN Your
Innovation**



WORKSTATION LC 1000



* Monitor, keyboard, and mouse are not included in the price

SPECIFICATIONS

Working area:	Up to 330 x 330mm max.
Max. cross-section of the component:	Up to 365 x 265mm (W x D)
Max. component height:	Max. height = 430mm minus work distance of the laser marker
Workpiece weight:	Max. 15kg
Enclosure weight:	88* kg (* data reference to enclosure with closed door without laser or other additional parts)
Enclosure dimensions:	600 x 824 x 543.05 mm (W x D x H)

The **Workstation LC 1000** is a high-performance safe and compact manual manufacturing workplace for high-quality laser marking for workpieces of small to medium size. The **LC 1000** is versatile and suitable for many applications: for industrial products such as prototypes, components, or small-scale production. Nearly all metal or plastic materials can be marked with a laser marker without problems. The workstation can be used in many different industries: Automotive and automotive supplier industries, tool and mold builders, medical technology industry, plastics processing industry or laser job order production.

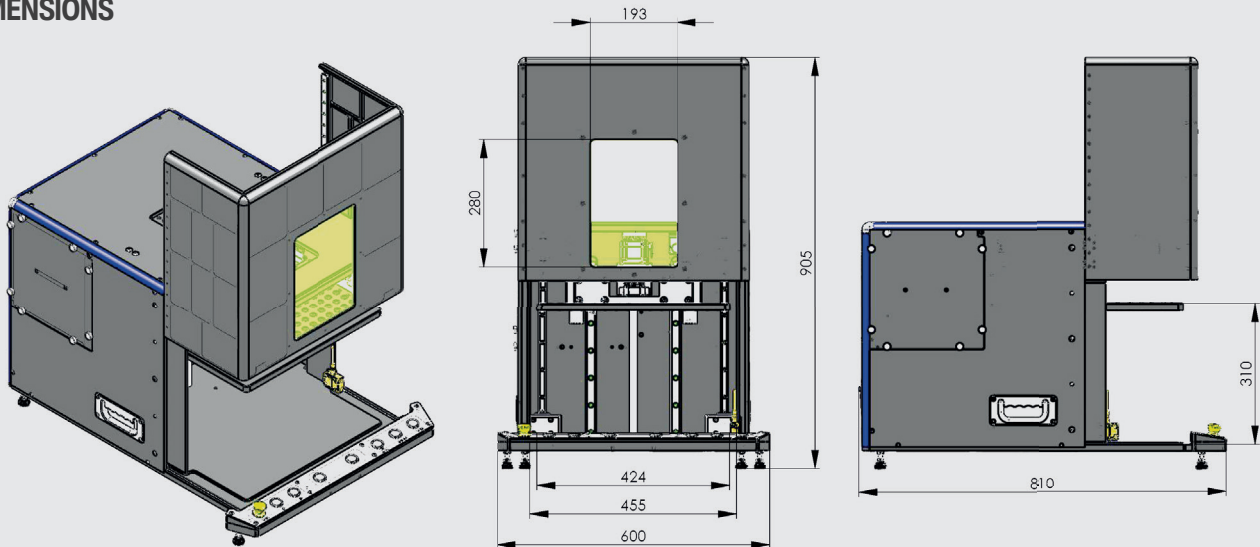
The **workstation LC 1000** with its laser class 1 and an electric driven z-axis supports the marking of components with different heights. The integrated perforated plate allows you to fix components accurately to ensure precise marking of the product. The electric driven safety cabin door with its large protective glass and the interior lighting give users good view of the parts and marking process and give ergonomic and easy access to position parts. Handling and controlling the workstation **LC 1000** is easily done with the high-performance industrial PC with its software control.

WORKSTATION LC 1000

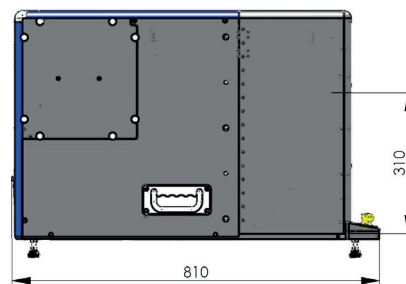
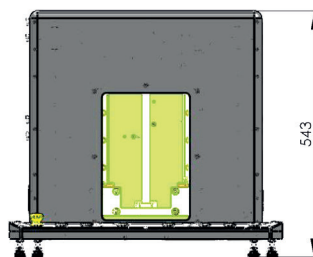
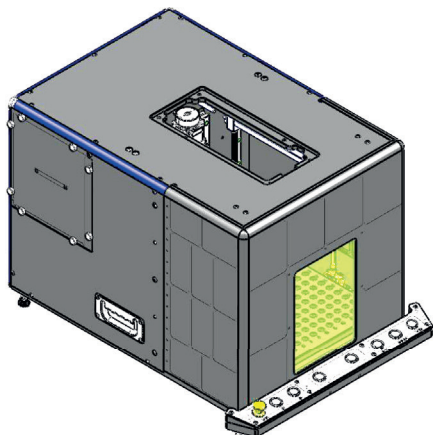
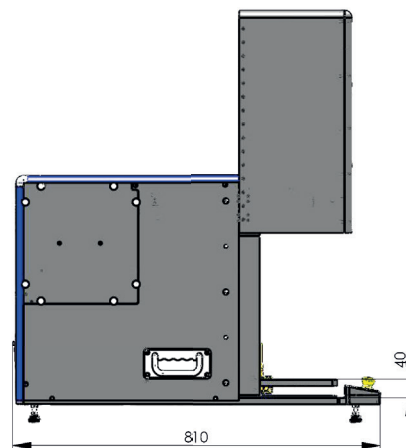
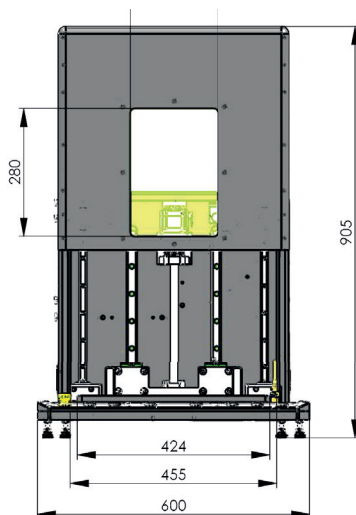
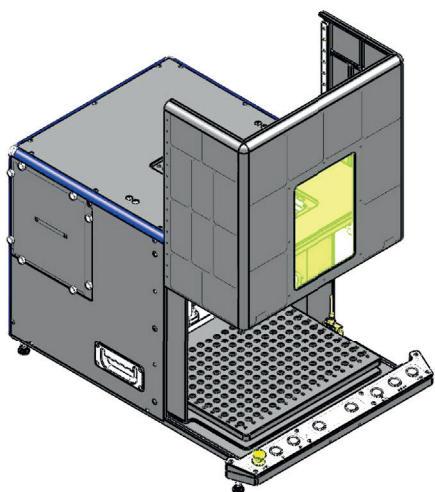
TECHNICAL HIGHLIGHTS AT A GLANCE:

- › Laser class 1
- › Mobile laser safety cabin
- › Electric driven z-axis 235mm
- › Electric driven safety cabin door including perforated plate
- › Laser protection glass window 280mm x 200mm
- › LED lighting
- › Suitable for all fiber lasers
- › Internal extraction unit with filter including activated carbon filter (filter levels F9/H13/activated carbon filter)
- › Integrated fanless industrial PC with all standard interfaces

DIMENSIONS



Dimensions



Panasonic Industry Europe GmbH

Caroline-Herschel-Strasse 100
85521 Ottobrunn
Tel. +49 89 45354-1000
info.pieu@eu.panasonic.com
industry.panasonic.eu