

PANASONIC FIRE ALARM SOLUTIONS
TECHNICAL DESCRIPTION



EBLWEB MONITOR v. 1.1.X

DOCUMENT INFORMATION

DOCUMENT NAME:	TECHNICAL DESCRIPTION EBLWEB MONITOR v. 1.1.X
DOCUMENT NUMBER:	MEW02716
DATE OF ISSUE:	2020-12-15
REV:	-
DATE OF REVISION:	-

Panasonic Fire & Security Europe AB
Jungmansgatan 12
SE-211 11 Malmö
Sweden
Tel: +46 (0)40 697 70 00
Internet: www.panasonic-fire-security.com

TABLE OF CONTENTS

1. INTRODUCTION.....	2
2. ABBREVIATIONS AND EXPLANATIONS.....	2
3. GENERAL DESCRIPTION	3
Web-server 1598.....	3
Gateway 5088.....	3
4. INSTALLATION.....	4
5. CONFIGURATION	5
5.1. CREATE A CONFIGURATION FILE.....	5
5.2. UPLOAD A MAP	6
5.3. ADD EBLWEB-SERVERS TO THE LIST.....	7
5.4. ADD EBLWEB-SERVERS TO THE MAP.....	8
5.4.1. REMOVE EBLWEB-SERVERS FROM THE MAP.....	8
5.5. CHECK	9
5.6. SETTINGS FOR THE HOST SERVER.....	10
5.7. SAVE CONFIGURATION.....	12
5.8. DOWNLOAD CONFIGURATION	12
6. EBLWEB MONITOR	13
6.1. STARTUP	13
6.1.1. MAP VIEW	13
6.1.2. LIST VIEW.....	14
6.1.3. THE LOCATION SYMBOL.....	14
6.2. STATUS BAR OVERVIEW	15
6.2.1. EXPLANATION OF SYMBOLS.....	15
6.2.2. TITLE.....	18
7. TECHNICAL DATA	19

1. INTRODUCTION

1. INTRODUCTION

This document describes the EBLWeb Monitor, how to perform installation, configuration and its functions. For technical specifications and requirements, see section [7 TECHNICAL DATA](#).

For more information on the web-server / gateway, see the following documents found on www.panasonic-fire-security.com:

- Technical Description for Web-server II 1598
- Operating Instructions for Web-server II 1598
- Technical Description for Gateway 5088

2. ABBREVIATIONS AND EXPLANATIONS

EBLWeb	Web browser interface for web-server / gateway	or web-server software
Host server	EBLWeb Monitor server	
PC	Personal Computer	

3. GENERAL DESCRIPTION

3. GENERAL DESCRIPTION

EBLWeb is a web-server based product used for remote controlling and monitoring a single EBL System via a Web-server / Gateway. "EBL system" refers to either of the two control units EBL 128 or EBL 512 G3.

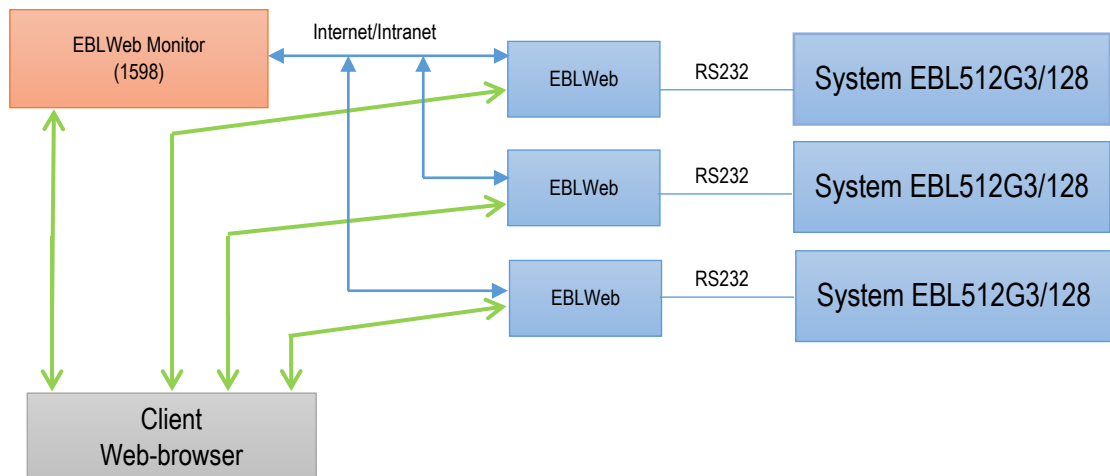
EBLWeb Monitor is an application used for monitoring several EBLWeb-servers at the same time, and it supports a simple image map handling, so that the user may configure where the monitored EBLWeb-server is located.

EBLWeb Monitor application provides the functionality to:

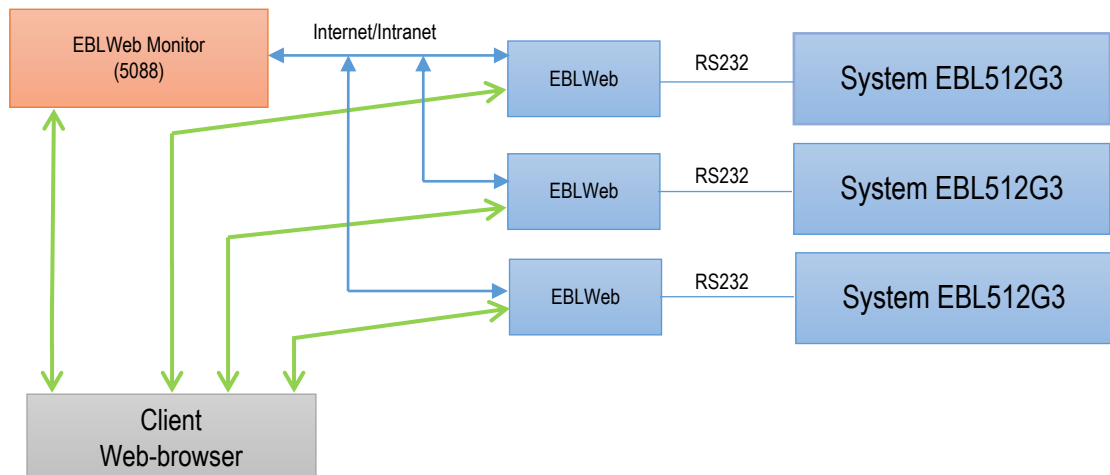
- Monitor the status of several EBLWeb-servers
- Overview where the monitored EBLWeb-servers are located on a map
- Open a website to a specific EBLWeb

See the schematic illustration of the application structure below:

Web-server 1598



Gateway 5088



4. INSTALLATION

4. INSTALLATION

The PC Commissioning tool, **EBLWeb Monitor Tool** is downloaded from www.panasonic-fire-security.com

The EBLWeb Monitor is configured via the PC Commissioning tool, EBLWeb Monitor Tool v.1.1.0 or later. The EBLWeb Monitor software, web-application, and configuration file will be downloaded to the host server via FTP (TCP/IP), in the EBLWeb Monitor Tool.

An EBLnet license and an EBLnet license key are required to be able to use the application.

Apply for EBLnet license key on [www.panasonic-fire-security.com / EBLnet Form](http://www.panasonic-fire-security.com/EBLnet%20Form)

This license key is unique and bound to the actual hardware ID for the host server, Web-server / Gateway.

This unique five-digits-ID, can be found on a label on the backside of the Web-server / Gateway.

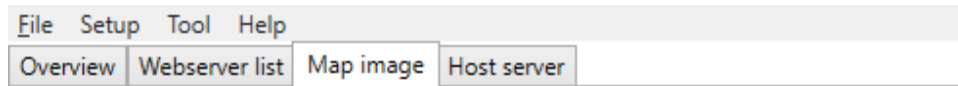
It is possible to test the EBLWeb Monitor without a valid license. In that case a demo license can be used, see section [5.1 CREATE A CONFIGURATION FILE](#).

For technical requirements, see section [7 TECHNICAL DATA](#) in this document.

5. CONFIGURATION

5. CONFIGURATION

Open the EBLWeb Monitor Tool. A dialog box with the following menu bar will open:



File menu: Start a new configuration file, save the current configuration file or open an already saved file.

Setup menu: Create a map. Upload an image to use as an image map for EBLWeb locations.

Tool menu: Download function.

Overview tab page: Overview of current configured EBLWeb in a list view and map image.

Web-server list tab page: Add EBLWeb into a list. Change or Remove an existing EBLWeb.

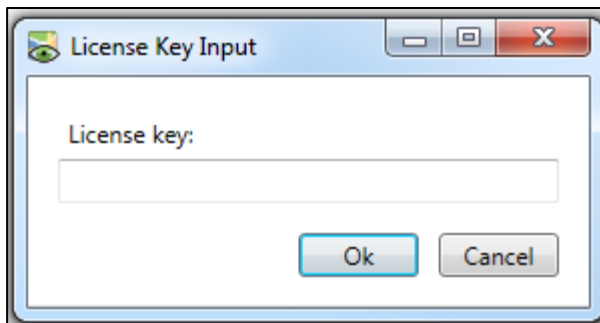
Map image tab page: Used to create the map view.

Host server tab page: Used to configure the host server for the web-application.

5.1. CREATE A CONFIGURATION FILE

- a) Make sure to have an EBLWin key connected to the PC.
- b) Open the **File** menu. Start a new configuration file.
- c) In the **Setup** menu, choose **License key**. Enter the license key code. Press **OK**.
Or
- d) To use a demo version, enter 'Demo' in the license key field. Press **OK**.

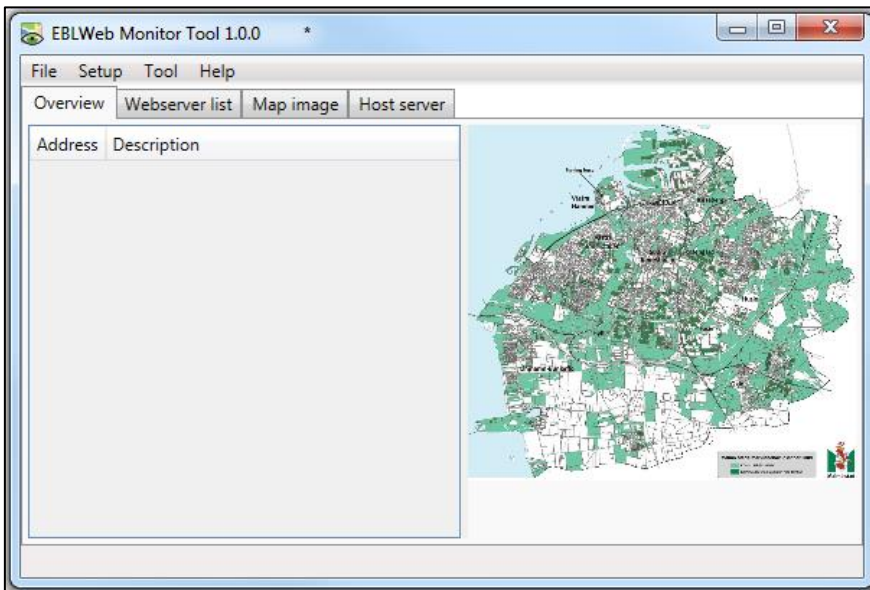
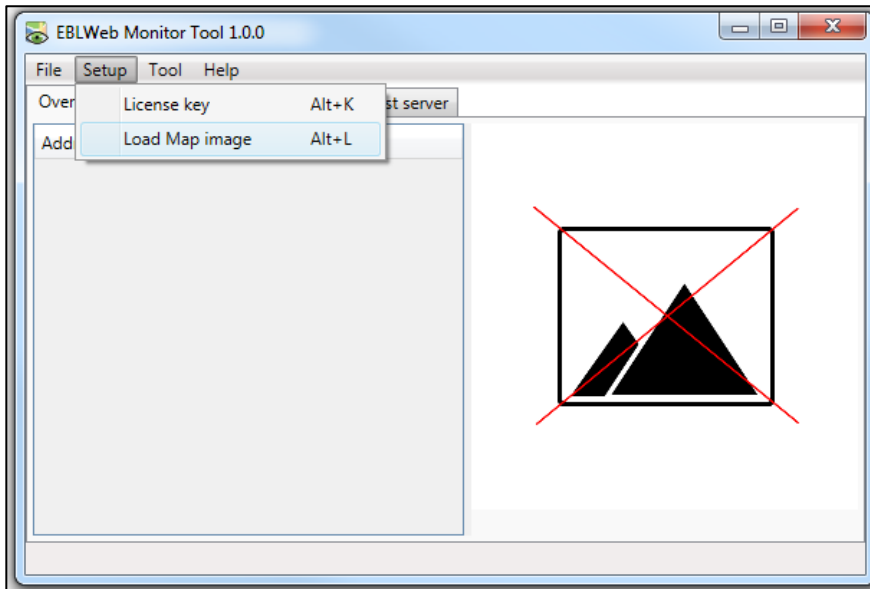
NOTE! When using a demo license, EBLWeb Monitor will only be fully functional for approximately one hour.



5. CONFIGURATION

5.2. UPLOAD A MAP

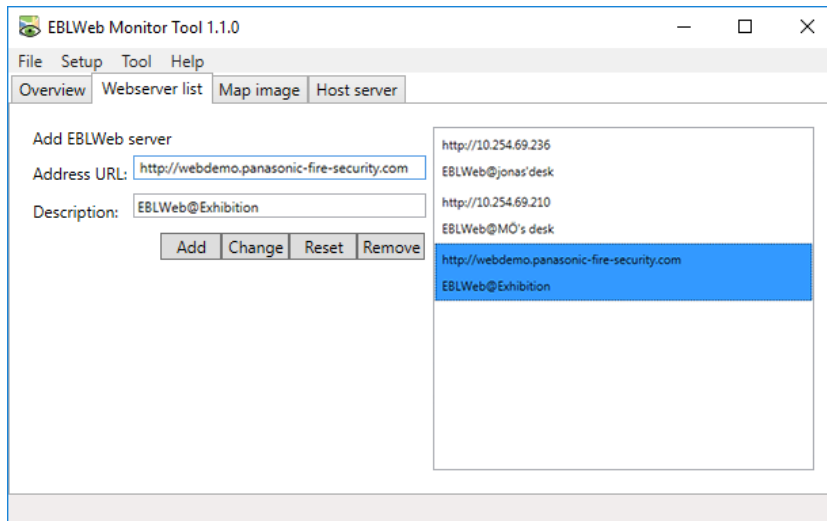
- a) Make sure to have a map image file to be used as a background for the EBLWeb locations. The common file formats for image can be used, such as png, jpg, and gif.
- b) In the **Setup** menu, choose **Load Map image** and browse for your map image file. Press **Open**, and your map image will show in the Overview tab page.
- c) To change the image, just browse for another image and open.



5. CONFIGURATION

5.3. ADD EBLWEB-SERVERS TO THE LIST

- a) In the **Webserver list** tab page, insert a web address and a descriptive text for the EBLWeb. Press **Add**. The web address and description will show in the field on the right side.

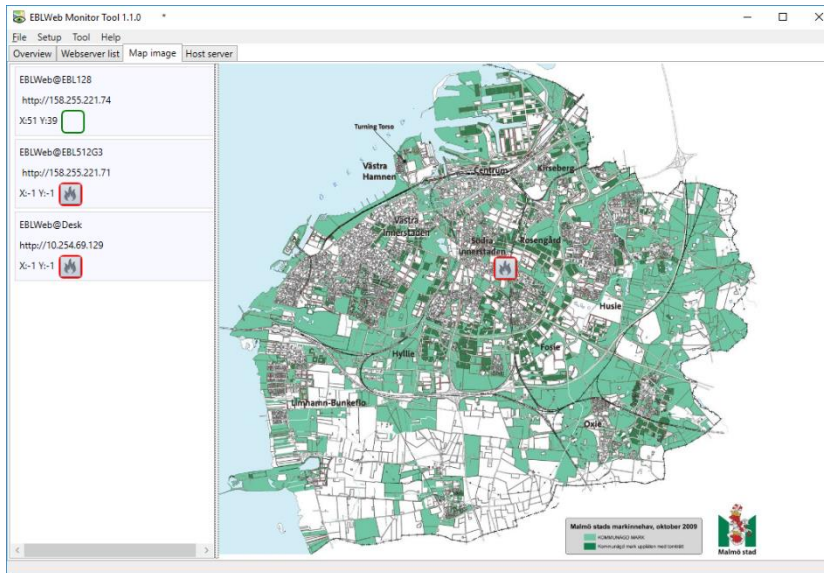


- b) To add another EBLWeb, repeat procedure a).
- c) To change or remove an already configured EBLWeb, select the EBLWeb in the current list on the right side. The selected EBLWeb is marked blue. Press **Change** or **Remove**.

5. CONFIGURATION

5.4. ADD EBLWEB-SERVERS TO THE MAP

- Go to the **Map image** tab page. The fire symbols in red colored frames are representing the different EBLWeb-servers.
- Drag and drop a fire symbol of the EBLWeb-server list, onto the user-defined map image. Place it on the correct position on the map. Once an EBLWeb-server has been placed onto the map, the symbol in the list will turn into a green frame.
- To adjust or change a location, it is possible to move an already placed fire symbol directly on the map.



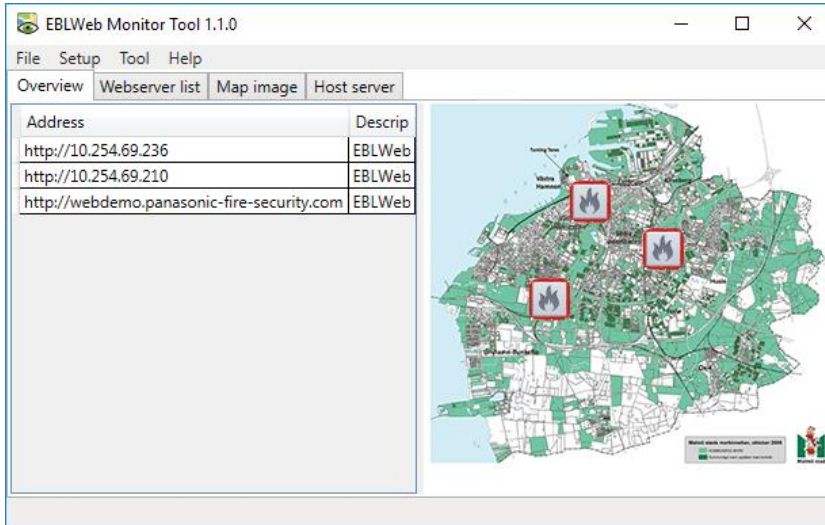
5.4.1. REMOVE EBLWEB-SERVERS FROM THE MAP

- In the **Map image** tab page: If a fire symbol is dragged outside of the map area, it will automatically get back into initial state in the list.
Or
- In the **Webserver list** tab page: Select the EBLWeb in the current list on the right side. Press **Reset**.

5. CONFIGURATION

5.5. CHECK

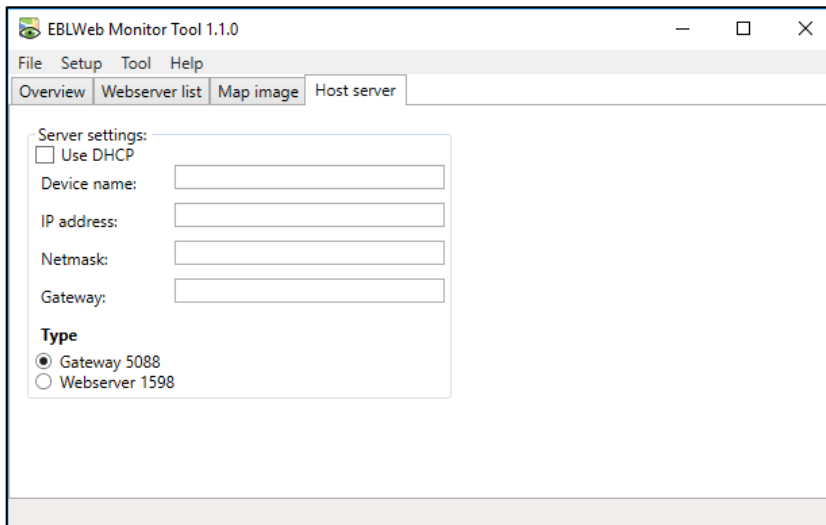
- Go to the **Overview** tab page. This page will show an overview of current configured EBLWeb-servers in a list, and also their respective location points on a map image.
- Check that all information and positions are correct.



5. CONFIGURATION

5.6. SETTINGS FOR THE HOST SERVER

- a) Go to **Host server** tab page. Configure the host server for the web-application as follows:
- b) Use DHCP: Select this option when a **dynamic IP** number shall be used.
- c) Device name: Is set in the **Webserver list** tab page. It is always recommended to have a Device name, not only when a dynamic IP number is used.
- d) If a **static IP** number shall be used, the following data have to be specified:
 - IP address (for monitoring web-server / gateway)
 - Netmask
 - Gateway



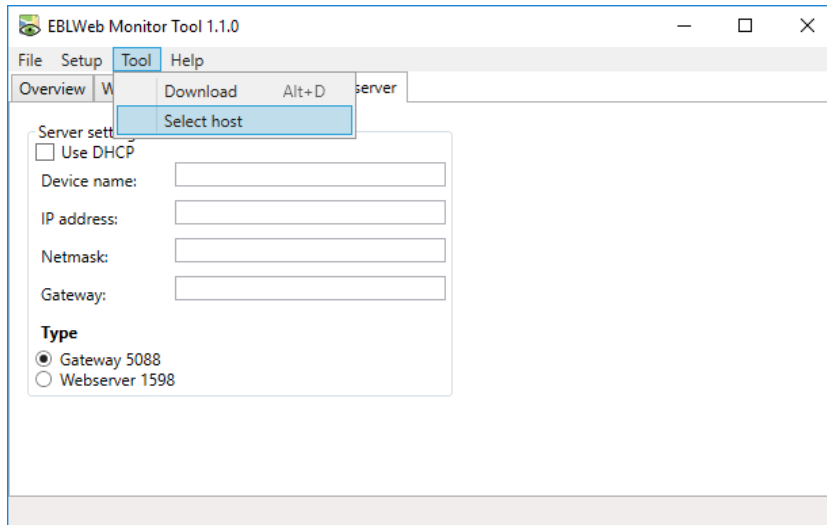
NOTE! The IP address is by delivery set to either DHCP or 192.168.1.169.

If the Local Area Network (LAN) administrator demands another IP address to be used, it can be changed via PC tool @CHIPTOOL provided by BECK IPC website: <http://www.beck-ipc.com>.

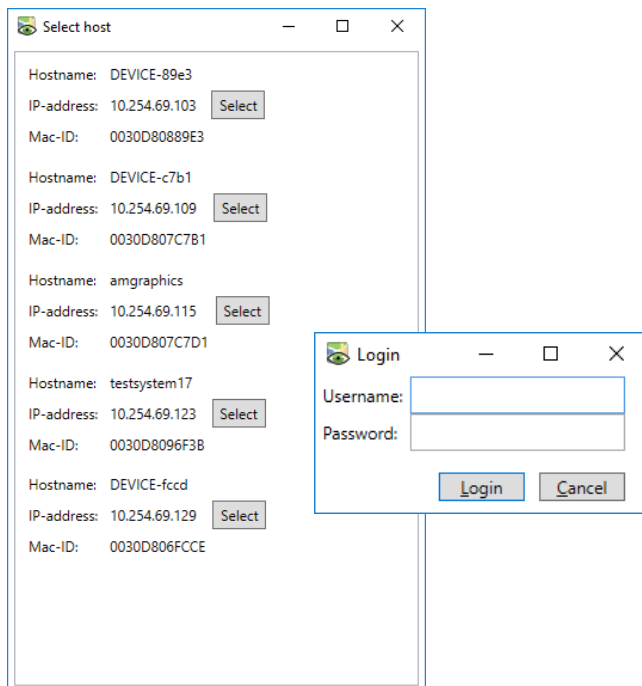
The PC tool @CHIPTOOL is only supported by Web-server 1598. To change the IP address for Gateway, use the built-in machine configuration via [https://gateway ip-address/machine_config](https://gateway-ip-address/machine_config), see Technical description MEW02670.

5. CONFIGURATION

If the IP address is unknown and the unit is a Gateway, Open the **Tool** menu / **Select host**.

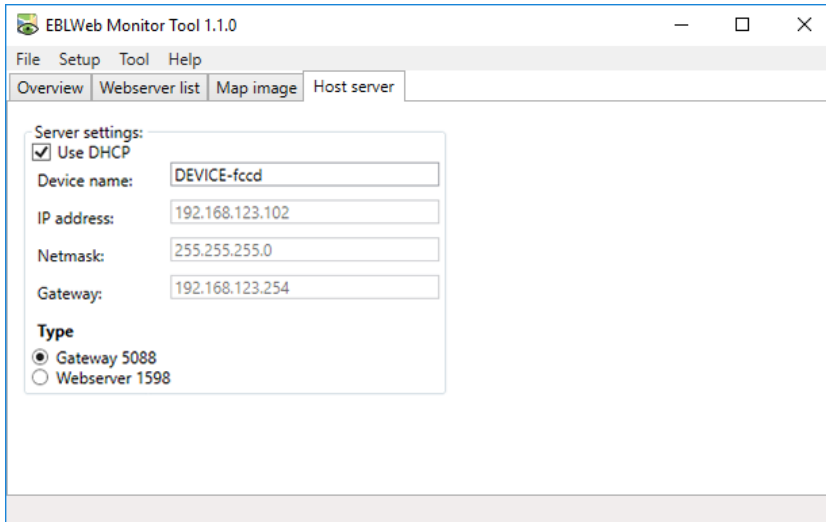


a) In the pop-up window, click **Select** for the gateway to add as host server.



5. CONFIGURATION

- b) Log on. When logged on, the gateway information will be added to the host server settings.



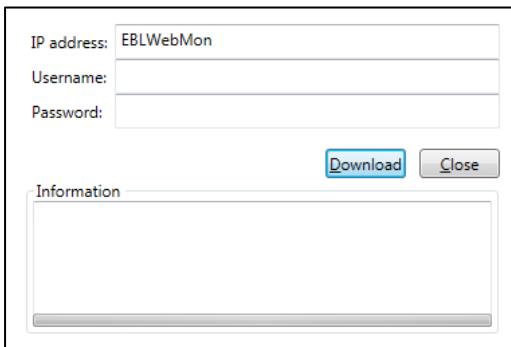
5.7. SAVE CONFIGURATION

- a) Open the **File** menu / **Save as**.
 b) Save the configuration file as .XML.

5.8. DOWNLOAD CONFIGURATION

NOTE! The Web-server / Gateway and the PC both have to be connected to the Local Area Network (LAN).
 As an alternative a "Crossed network cable" or a Hub can be used.

- c) Open the **Tool** menu / **Download**.
 d) In the dialog window, enter IP-address to the host server.
 e) Enter username and password for the FTP function. The default username/password is:
 Web-server: ftp/ftp
 Gateway: admin/admin
 f) Press **Download**.



- g) The **Information** text field is displaying the status of the download procedure.

6. EBLWEB MONITOR

6. EBLWEB MONITOR

NOTE! Below is an example on how the web-application in the browser might look like. The look can vary depending on web-browser, screen resolutions, settings, map-image and so on.

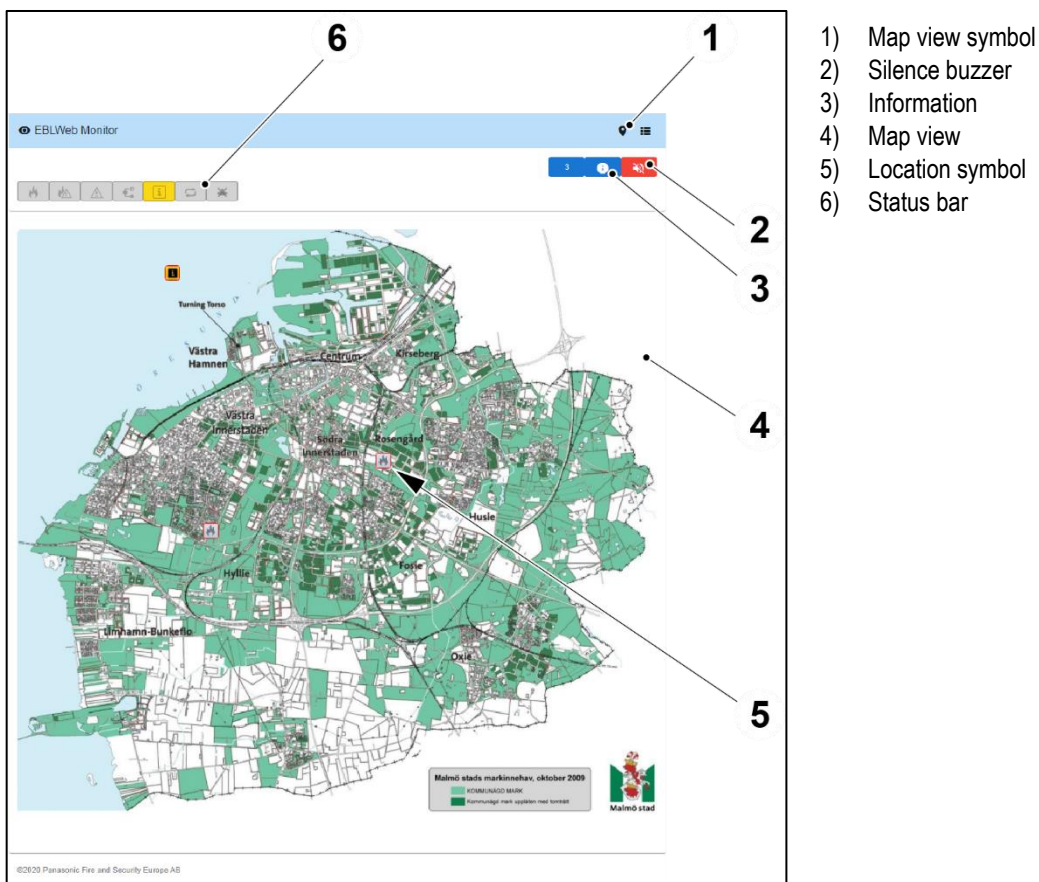
6.1. STARTUP

- a) Enter the IP address of the host server in the web browser. The web-application EBLWeb Monitor will open the **Map view**.

6.1.1. MAP VIEW

In the **Map view** (4) it is possible to monitor the status of all the added EBLWeb-servers. Each EBLWeb-server on the map will show its respective deviation status through a set of location symbols (5). The deviations will also show in the status bar (6).

- a) To access the Map view, click on the Map view symbol (1).
- b) Click a location symbol (6) to enter the EBLWeb of that specific EBLWeb-server.

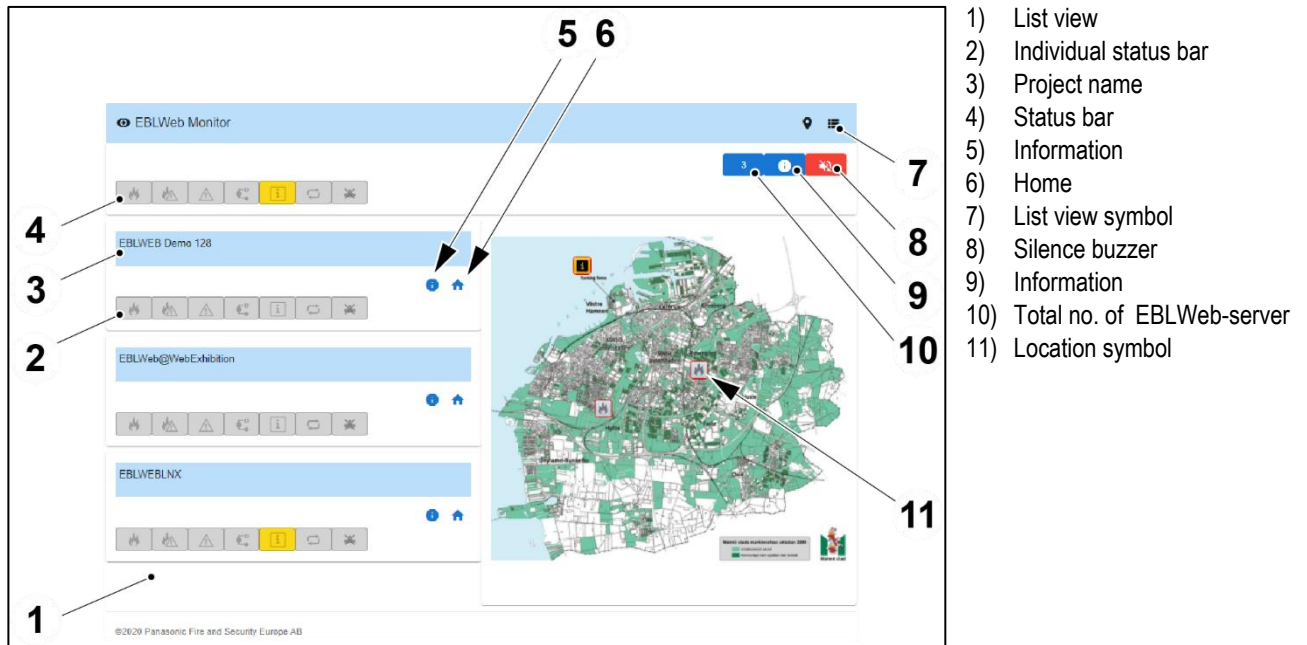


6. EBLWEB MONITOR

6.1.2. LIST VIEW

The **List view** (1) shows a list of individual status bars (2) for each EBLWeb-server. Each status bar also shows the project name (3).

- a) To access the **List view** (1), press the List view symbol (7).
- b) Click a location symbol (11) to enter the EBLWeb of that specific EBLWeb-server.

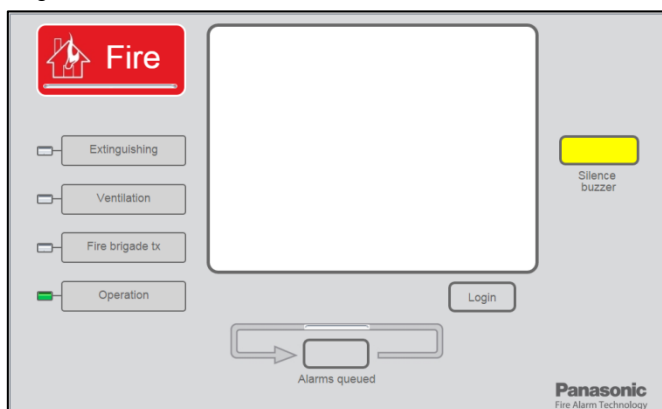


6.1.3. THE LOCATION SYMBOL

The EBLWeb location symbol is reflecting the status bar. Since only one symbol can be shown at a time for each EBLWeb, there is a priority amongst the symbols. The highest priority is starting from the left side of the status bar.

When a fire alarm occurs, the fire alarm symbol will be shown in the map; it will be red and blinking. When there are no deviations, a grey fire alarm symbol will be shown in the map.

- a) Click on the location symbol to open a webpage to the EBLWeb. In the webpage it is possible to login to view more information or remote control the actual EBL System via the Web-server /

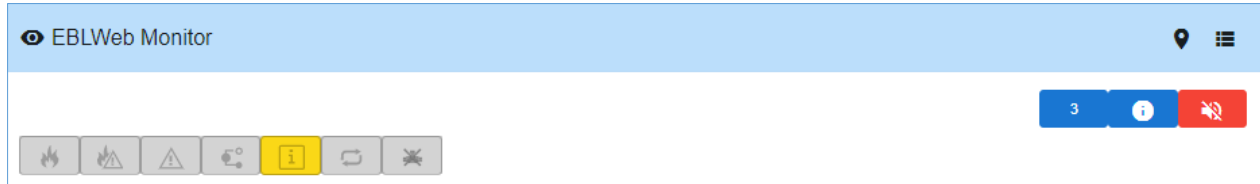


6. EBLWEB MONITOR








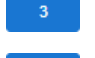


Gateway.

6.2. STATUS BAR OVERVIEW

The main status bar shows a summary status of all EBLWeb-servers that are being monitored.



6.2.1. EXPLANATION OF SYMBOLS

	Fire alarm
	Pre-warning/Co-occurrence/Quiet/Delayed alarm
	Fault
	Disablement
	Technical warning
	Interlocking
	Communication error
	Shows total no. of EBLWeb-server being monitored
	Information
	Silence buzzer

SILENCE BUZZER

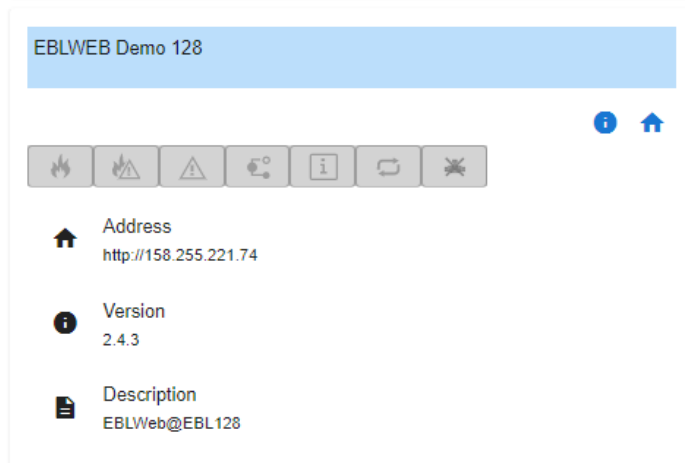
When a fire alarm occurs amongst the EBLWeb-servers that are being monitored, the web-application will start a buzzer sound. The buzzer will be silenced automatically when there is no fire alarm in any of the systems.

- To silence the buzzer temporary, click the Silence Buzzer symbol. The buzzer will be silenced until another fire alarm occurs.

6. EBLWEB MONITOR

INFORMATION SYMBOL 

- a) Click at the Information symbol for information on:
- Server address to EBLWeb-server
 - Current EBLWeb software version
 - User-defined description

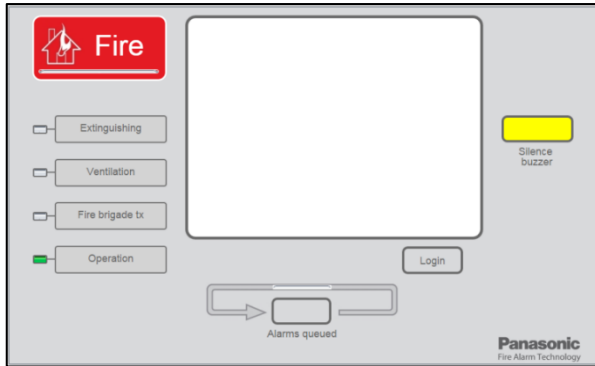


6. EBLWEB MONITOR

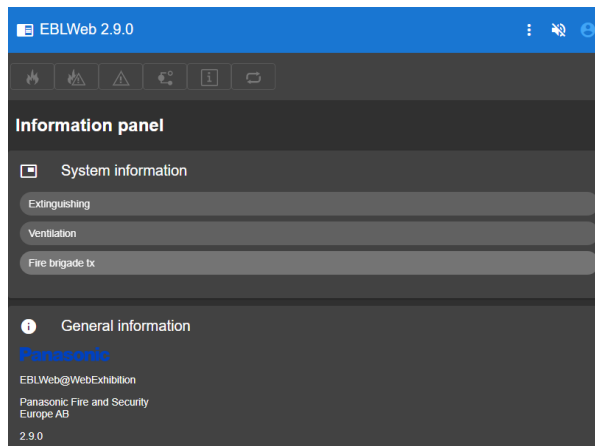
HOME SYMBOL

- a) Click on the home symbol to open a webpage to the EBLWeb. On the webpage it is possible to login to view more information or remote control the actual EBL System via the Web-server / Gateway.

Web-server:



Gateway:



6. EBLWEB MONITOR

6.2.2. TITLE

Normally, the project name (1) of respective EBLWeb-server will be retrieved and shown as title in the individual status bar.

In case the project name (1) cannot be retrieved, for example, due to communication fault or incompatible versions, the user-defined description (2) will be shown as title instead.



The screenshot shows the EBLWeb Monitor interface. At the top, a blue title bar displays "EBLWEB Demo 128", which is pointed to by a line from the number "1". Below the title bar is a row of icons: a flame, a warning triangle, a triangle with an exclamation mark, a refresh symbol, an information icon, a home icon, and a close symbol. To the right of these icons are two larger icons: a blue information icon and a blue home icon. Below the icons, the status information is displayed in a list format:

- Address**: http://158.255.221.74
- Version**: 2.4.3
- Description**: EBLWeb@EBL128

The "Description" field is pointed to by a line from the number "2".

1) Project name / Title
2) User-defined description

7. TECHNICAL DATA

7. TECHNICAL DATA

Hardware	1598 - Web-server II 5088 - Gateway
Hardware	1594 - EBLWin key (Used during configuration)
Software	EBLWeb ≥ v. 2.2.x Web512 II United v.2.7.3
Configuration:	EBLWeb Monitor Tool ≥ 1.1.0
EBLnet license	Valid - EBLWeb Monitor has full functionality Demo - EBLWeb Monitor has one hour functionality Invalid - EBLWeb Monitor has no functionality
Validated web browsers	Microsoft Edge, Google Chrome