

PANASONIC FIRE ALARM SOLUTIONS TECHNICAL DESCRIPTION



EBL GRAPHICS v. 2.5.X



DOCUMENT INFORMATION

DOCUMENT NAME:	TECHNICAL DESCRIPTION EBL GRAPHICS v. 2.5.X
DOCUMENT NUMBER:	MEW02441
DATE OF ISSUE:	2019-02-20
REV:	2
DATE OF REVISION::	2019-04-15

Panasonic Fire & Security Europe AB
Jungmansgatan 12
SE-211 11 Malmö
Sweden
Tel: +46 (0)40 697 70 00
Internet: www.panasonic-fire-security.com

TABLE OF CONTENTS

1.	INTRODUCTION.....	4
1.1.	LIMITATIONS.....	4
2.	ABBREVIATIONS AND EXPLANATIONS.....	4
3.	EBL GRAPHICS DESIGNER	5
3.1.	GENERAL DESCRIPTION.....	5
3.2.	INSTALLATION.....	6
3.3.	CREATE A NEW PROJECT	8
3.4.	DRAWING STRUCTURE.....	9
3.5.	ADD A DRAWING.....	10
3.5.1.	MOVE DRAWING IN STRUCTURE.....	12
3.6.	OVERVIEW DRAWING	13
3.7.	DETAILED DRAWING	14
3.7.1.	LOAD ALARM POINT SYMBOLS	14
3.7.2.	ADD ALARM POINT SYMBOLS	15
3.7.3.	ADD INTERLOCKING SYMBOL.....	16
3.7.4.	ADD OUTPUT SYMBOL	17
3.7.5.	ADD TEXT LABEL	17
3.7.6.	ADD IP CAMERA	18
3.7.7.	ADD A PANASONIC NETWORK CAMERA	19
3.7.8.	PLACE SYMBOLS	20
3.7.9.	DELETE SYMBOLS	21
3.7.10.	REMOVE ALL ALARM POINTS.....	21
3.8.	GRAPHIC EFFECTS	22
3.8.1.	EDIT ALARM POINT SYMBOLS	22
3.8.2.	EDIT DEFAULT COLOR FOR ALARM POINT SYMBOLS.....	23
3.8.3.	EDIT BACKGROUND COLOR.....	23
3.8.4.	DESIGN TEXT LABEL	24
3.8.5.	ADD CUSTOM ICONS.....	24
3.9.	EBLNET CONFIGURATION	25
3.9.1.	EBLNET SETTINGS	26
3.9.2.	EBL GRAPHICS SETTINGS.....	26
3.10.	USER CONFIGURATION	27
3.11.	CREATE A COLLECTION	28
4.	EBL GRAPHICS.....	32
4.1.	GENERAL DESCRIPTION.....	32
4.2.	STARTING UP	33
4.3.	TOOL STRIP.....	34
4.4.	DRAWING VIEW.....	34
4.4.1.	ALARM POINT SYMBOLS.....	35

1 INTRODUCTION

4.4.2.	ALARM POINT PROPERTIES.....	36
4.4.3.	SENSOR VALUES.....	37
4.4.4.	DISABLE ALARM POINT IN DRAWING VIEW.....	37
4.4.5.	RE-ENABLE ALARM POINT IN DRAWING VIEW.....	38
4.4.6.	RESET ALARM IN DRAWING VIEW.....	39
4.4.7.	INTERLOCKING COMBINATION IN DRAWING VIEW.....	40
4.4.8.	OUTPUT IN DRAWING VIEW.....	40
4.5.	EVENT LOG.....	41
4.6.	DEVIATIONS VIEW.....	42
4.6.1.	RE-ENABLE ALARM POINT IN DEVIATIONS VIEW.....	43
4.6.2.	ACKNOWLEDGE FAULTS IN DEVIATIONS VIEW.....	44
4.6.3.	RESET ALARM IN DEVIATIONS VIEW.....	45
4.7.	SYSTEM LIST.....	46
4.8.	SYSTEM OVERVIEW.....	46
4.9.	TREEVIEWS.....	47
4.10.	LEGEND.....	47
4.11.	ABOUT EBL GRAPHICS.....	47
4.12.	EXIT EBL GRAPHICS.....	48
5.	TECHNICAL DATA.....	49

1. INTRODUCTION

This document describes a product that consists of two applications; EBL Graphics Designer and EBL Graphics.

EBL GRAPHICS DESIGNER

EBL Graphics Designer is used to create detailed drawings and to import alarm points from an EBLWin file (*.ebl). Overview drawings are also created here. This application is also used to create users and to configure the EBLnet connection for EBL Graphics.

EBL GRAPHICS

This is the monitoring application. It will use EBLnet to connect to a web-server and show all faults, disablements and so on in the deviations view. It will also present fire alarms and disablements on the drawings. The user may be granted to reset fire alarms, disable / re-enable and acknowledge faults.

1.1. LIMITATIONS

EBL Graphics version 2.5.X exist in both 32-bit or 64-bit version.

The 64-bit version should be used if the plant is large, since it is memory consuming for the PC.

It is possible to run the 32-bit version of EBL Graphics (with network cameras) on 64-bit OS, but EBL Graphics will be limited to RAM usage according to 32-bit OS.

2. ABBREVIATIONS AND EXPLANATIONS

EBLWeb	Web browser interface for web-server / web-server software
PC	Personal Computer
RAM	Random Access Memory

3. EBL GRAPHICS DESIGNER

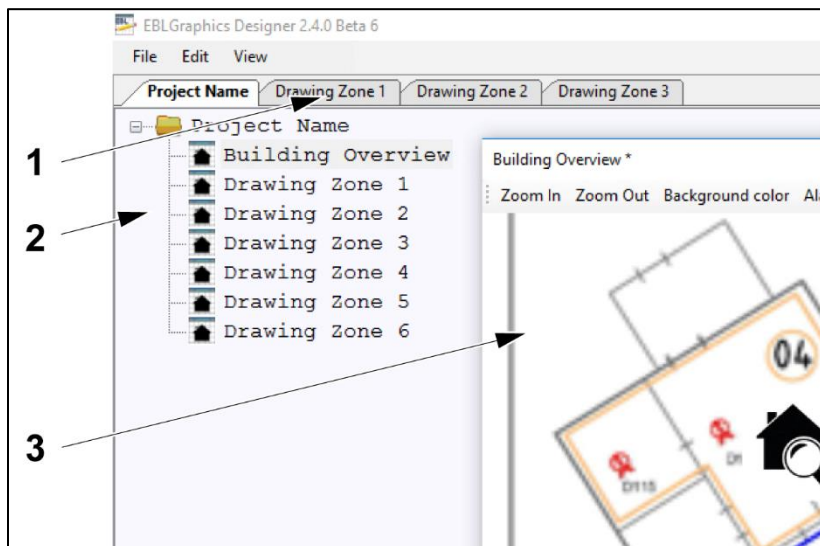
The configuration in EBL Graphics Designer will result in a XML-file, which can be opened and used locally by the end user. The end user needs to download the EBL Graphics software, and also needs the user data created in EBL Graphics Designer.

3.1. GENERAL DESCRIPTION

This application provides the functionality to:

- Create detail drawings
- Create overview drawings
- Place alarm points on the drawings
- Define the users of the EBL Graphics application
- Configure the EBLnet connection

The EBL Graphics Designer has a tree view, into which the drawings are added. The drawing will be opened as a tab. It is possible to drag the drawing tab to get a detached drawing window. Once opened, it is possible to drag and drop an image file from windows explorer to the drawing. This will be the background drawing. Onto the background drawing one can drag and drop alarm points from the Symbols window, see section [3.7.1 LOAD ALARM POINT SYMBOLS](#).



- 1) Drawing tab
- 2) Tree view
- 3) Detached drawing window

NOTE! Make sure the EBL Graphics application is closed when changes are made in the EBL Graphics Designer.

3.2. INSTALLATION






These applications are downloaded from <http://pesn.panasonic.se>.

When the EBL Graphics is downloaded, the EBL Graphics Designer is automatically included. An EBLnet license and an EBLnet license key are required to be able to use the applications.

- a) Download the EBL Graphics software and Drivers from <http://pesn.panasonic.se> to the PC. Drivers_for EBL_Graphics contains for example drivers for network camera and chart handling.

Software	
Description	
S/W, Drivers for EBL Graphics	
S/W, EBL Graphics V2.4.0 (for 32 bit OS)	
S/W, EBL Graphics V2.4.0 (for 64 bit OS)	

- b) The installation procedure includes the following files, see below.

Name	Type	Size
 MSChart.exe	Application	1,809 KB
 nwc4Ssetup.exe	Application	1,932 KB
 setup.exe	Application	418 KB
 Setup.msi	Windows Installer Package	26,439 KB
 vcredist_x86.exe	Application	2,639 KB

Install the files in the following order:

- 1) vcredist_x86.exe
- 2) nwc4Ssetup.exe
- 3) MSChart.exe
- 4) setup.exe

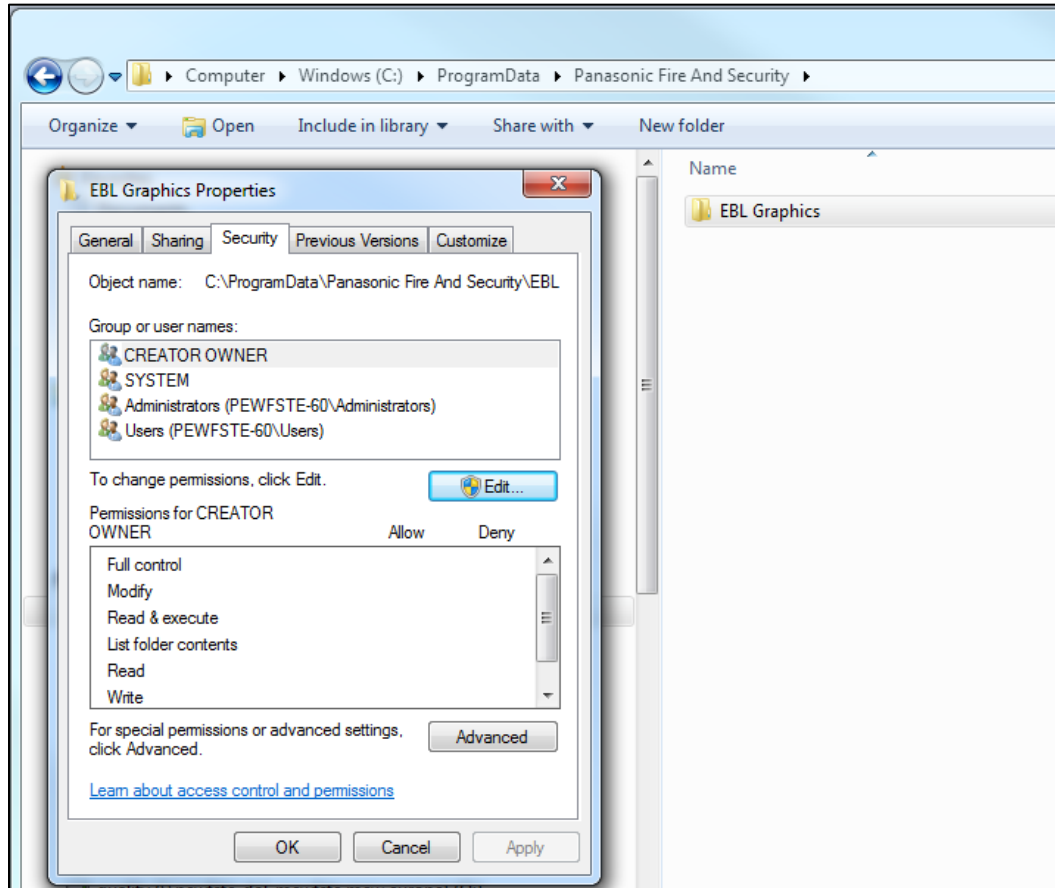
Continued

3 EBL GRAPHICS DESIGNER

Continued

The event log is saved in the 'Panasonic Fire And Security' folder. The user of EBL Graphics Designer needs 'Modify', 'Read', and 'Write' permission to this folder.

- c) Go to C:/ProgramData/Panasonic Fire And Security/
- d) Right click on the EBL Graphics folder. Select **Properties**.
- e) In the dialog window, select **Security**.
- f) Press Edit and change the settings for 'Modify', 'Read', and 'Write'. Tic the checkboxes to **Allow**.
- g) Press **OK**.



For technical requirements, see section 5 TECHNICAL DATA in this document.

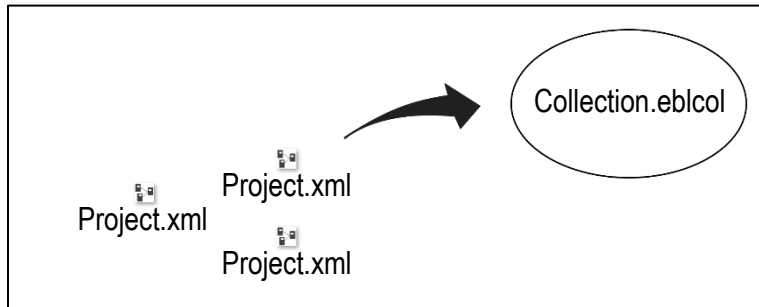
3.3. CREATE A NEW PROJECT

One EBL-system corresponds to one project.

Select an empty folder for the project xml file. If the data has to be moved or a backup should be made, then it is simply a matter of moving / copying the entire root folder.

Later on you must create a collection. One or several projects can be included in that collection.

See [3.11 CREATE A COLLECTION](#).



- a) Make sure you have created a folder for the project to be saved in.
- b) Start the EBL Graphics Designer and select **create a new project**.



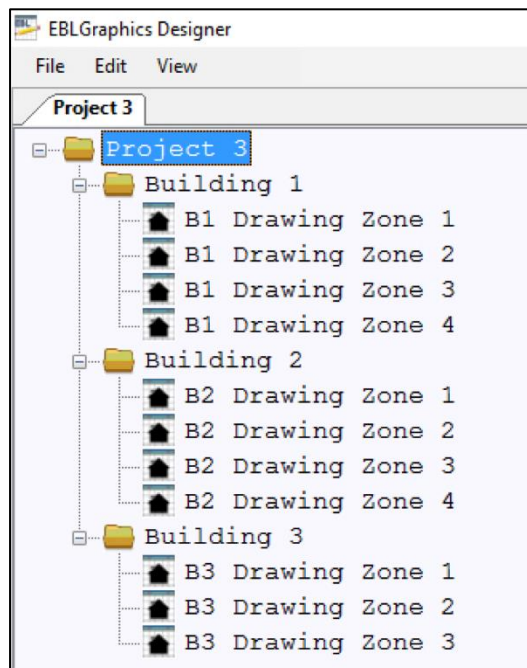
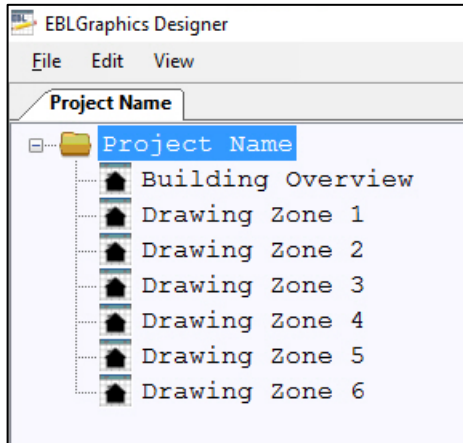
- c) Browse for the folder where the project will be saved. Press **OK**.
- d) The project filename will be the same as the folder but with the extension xml.

NOTE! This folder will be the root of the project. When creating drawings, these will be saved in this folder.

3 EBL GRAPHICS DESIGNER

3.4. DRAWING STRUCTURE

It is recommended to arrange the drawings in the tree view structure so that the structure is reflecting the actual building. See the examples below.



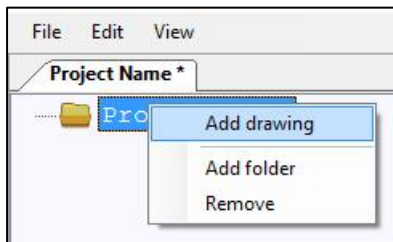
3.5. ADD A DRAWING

NOTE! The appearance of the drawing view can vary depending on screen resolutions, settings, size / resolution of the drawing-image and so on.

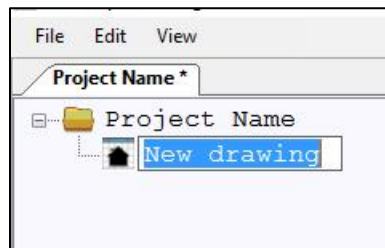
Maximum number of drawings and links (magnifying glass) in a project depends on the memory of the PC, and the size of the drawings. There is no limit set in the software.

The image formats that are supported by EBL Graphics are:

- BMP
- GIF
- JPEG
- PNG
- TIFF



- a) Right-click the **map** symbol in the tree view and select 'Add drawing'.
A drawing node (house symbol) named "New drawing" will appear.
- b) Rename the drawing node by clicking on "New drawing" twice. Write the new name and press **Enter**.

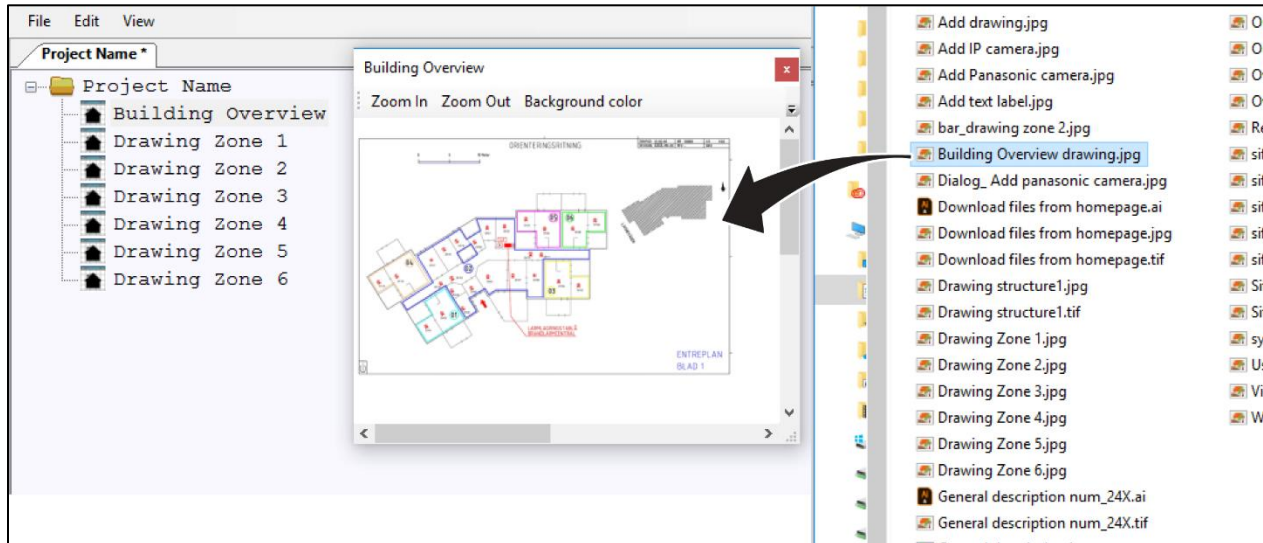


Continued

3 EBL GRAPHICS DESIGNER

Continued

- c) Double click a **drawing node** to open an empty drawing window.
- d) Drag and drop an image file into the drawing window. It is now possible to zoom and scroll the drawing.



- e) Save the drawing: File / **Save**.
- f) To close the drawing, click the **close** symbol in the upper right corner.

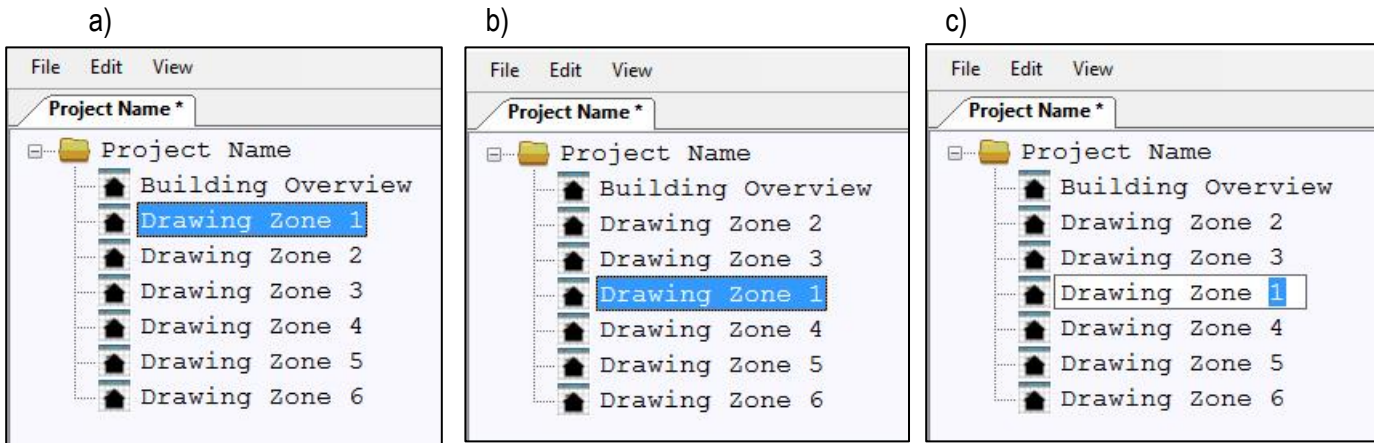
TIP! Zoom in the drawing: CTRL+MouseWheel
Pan in the drawing: CTRL+MouseLeft

3 EBL GRAPHICS DESIGNER

3.5.1. MOVE DRAWING IN STRUCTURE

It is possible to change the position of a drawing in the tree view.

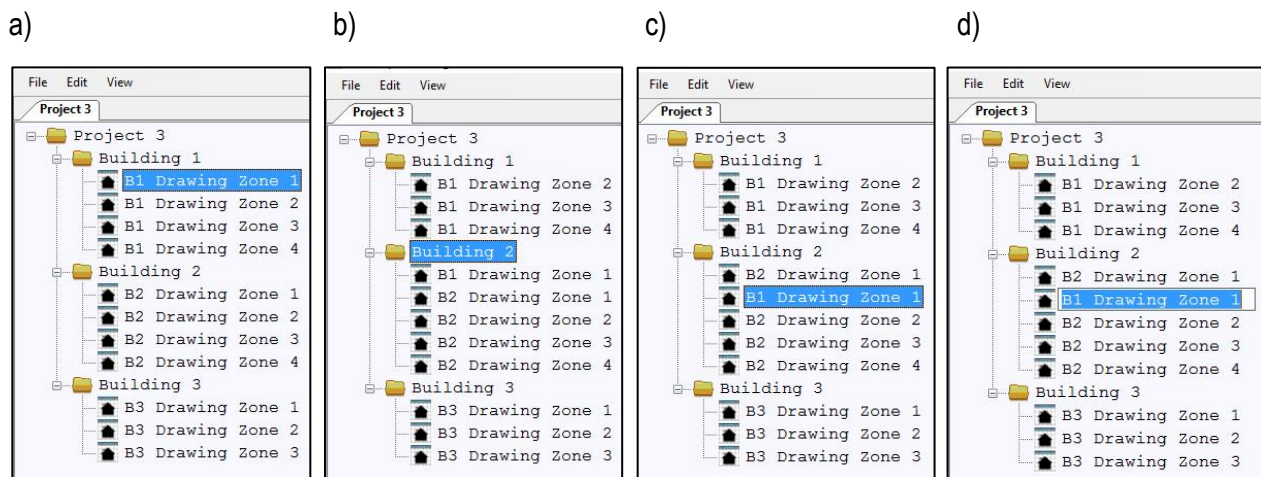
- a) Drag the drawing.
- b) Drop the drawing on the node above the desired position.
- c) Rename the drawing.
- d) Save project.



It is also possible to move drawings between different folders in a project structure like below.

In the following example the 'B1 Drawing Zone 1' will be moved to position 2 in 'Building 2' folder.

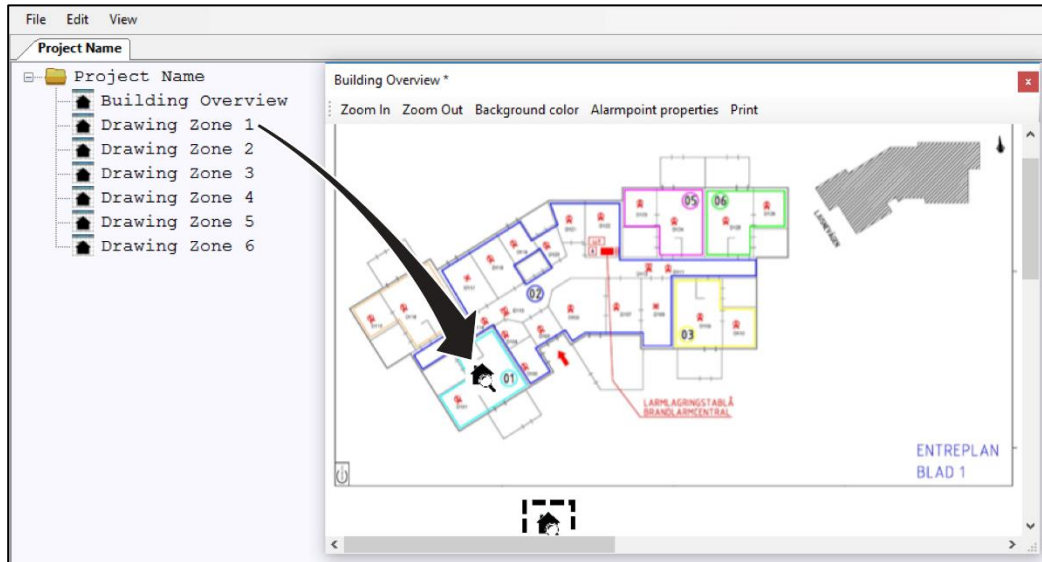
- a) Drag the drawing.
- b) Drop the drawing on to the 'Building 2' folder. The drawing will automatically be given position 1 in 'Building 2' folder.
- c) Drag and drop the drawing 'B1 Drawing Zone 1' one step down.
- d) Rename all affected drawings in 'Building 1' and 'Building 2' folders.
- e) Save project.



3.6. OVERVIEW DRAWING

It is recommended to have an overview drawing over the building or building area. This drawing can be provided with links to the different detailed drawings. The link symbols will also indicate deviations in the EBL system. The links will only function in EBL Graphics.

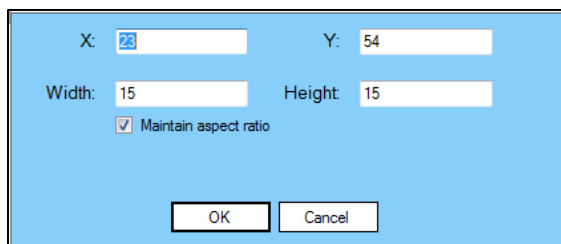
- Double click on the **drawing node** to open the overview drawing.
- Drag and drop the detailed drawing from the tree view, into the overview drawing. The link will appear as a “magnifying glass” symbol.



NOTE! The symbol might be “dropped” outside the drawing area, and hidden if the window is not maximized.

- To change size of the symbol, double click the “magnifying glass” symbol. A dialog window will appear.

NOTE! The `Maintain aspect ratio` checkbox is selected by default.



- To delete the link, click on the “**magnifying glass**” symbol to select it. Press **Delete**.

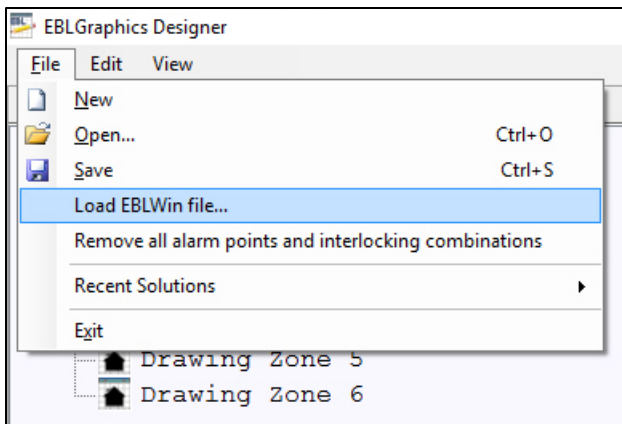
3 EBL GRAPHICS DESIGNER

3.7. DETAILED DRAWING

The detailed drawing will show the position of all the alarm points for that chosen area. The alarm point symbols will indicate deviations in the system. It is also possible to insert links to network cameras.

3.7.1. LOAD ALARM POINT SYMBOLS

- a) In the File menu, select 'Load EBLWin file...' and browse to the project EBLWin file (*.ebl). Open.



- b) The **Symbols** window will appear in a new tab.

The Symbols window displays a list of alarm points. The columns are: Drawing, Zone-address, Text, Instructions, and Camera. The list includes various detector types and their addresses.

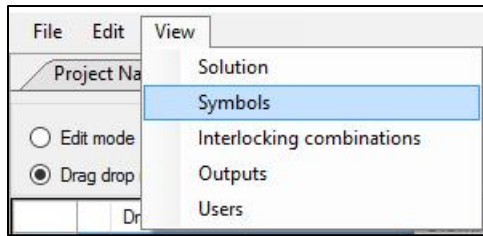
Drawing	Zone-address	Text	Instructions	Camera
001-01	001-01	Manual Call Point 3333		
001-02	001-02	Analog Heat Detector 3308		
002-01	002-01			
002-02	002-02	Analog Multi Detector (smoke) 4300		
002-03	002-03	Analog Multi Detector (heat) 4300		
010-01	010-01	Analog photoelectric smoke detector 4301		
010-02	010-02	Analog heat detector 3309		
020-01	020-01	Smoke detector 2304 / base 2312		
030-01	030-01	Multi detector, Advanced mode		
100-01	100-01	3361 zone line input		
101-01	101-01	Manual Call Point 3333		
101-02	101-02	Analog Heat Detector 3308		
102-01	102-01	Analog Multi Detector 4401 Advanced mode		
102-02	102-02	Analog Multi Detector 4400 Advanced mode		
110-01	110-01	Mounted on sounder base		
110-02	110-02	Analog heat detector 3309		
200	200	DET8 zone line input		
333	333	DET8 zone line input		
700-01	700-01	Aspect Grizzle 01		
700-02	700-02	Aspect Grizzle 02		
800-01	800-01	Wireless detector 4611		
800-02	800-02			

- c) The symbols can be sorted by any of the columns headings.

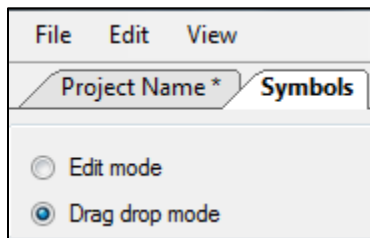
3 EBL GRAPHICS DESIGNER

3.7.2. ADD ALARM POINT SYMBOLS

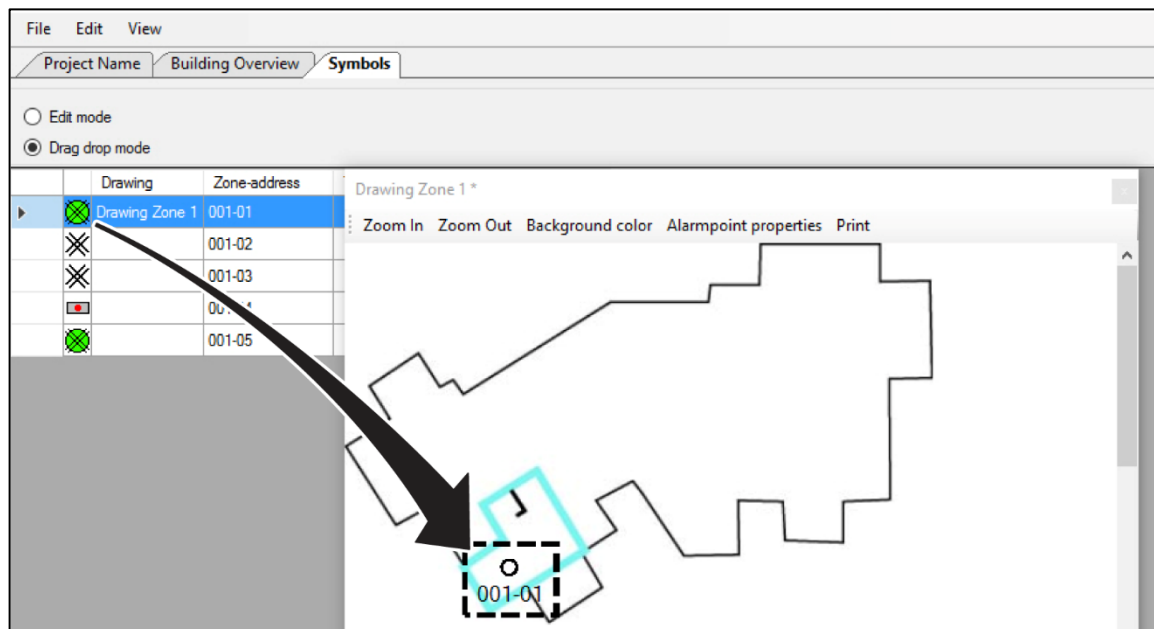
NOTE! Before adding symbols to the drawing; save the drawing.



- a) Select **View** menu / **Symbols** to open the symbols window.
- b) Select 'Drag drop mode' in the Symbols window.



- c) Drag and drop the symbols from the symbol window onto the drawing. In the column 'Drawing' a reference will appear; the name of the drawing in which the symbol is used.



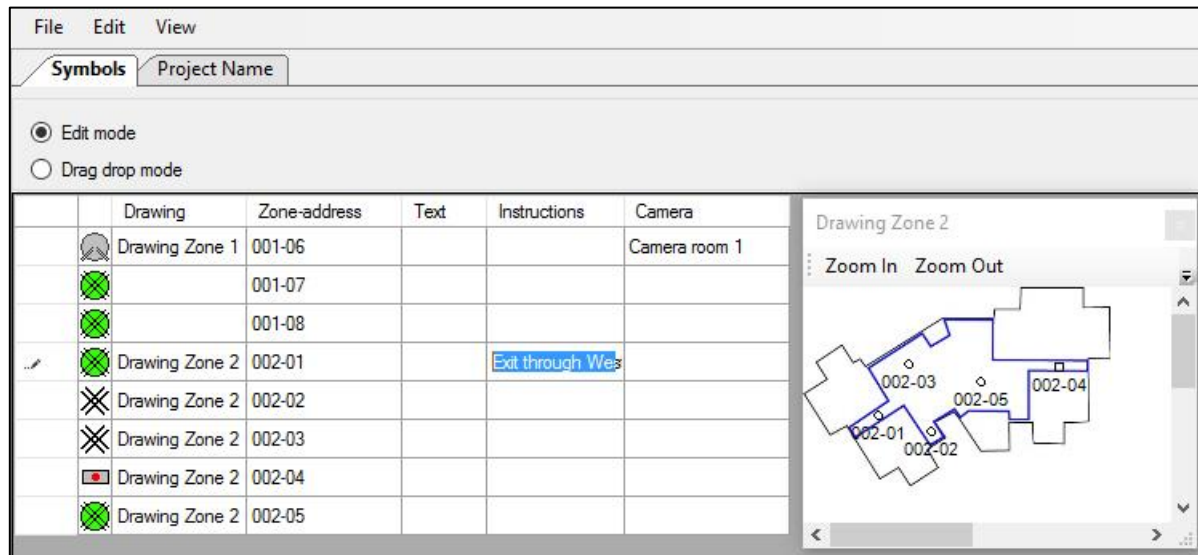
- d) To edit the size of the symbol, see section [3.8 GRAPHIC EFFECTS](#).

Continued

3 EBL GRAPHICS DESIGNER

Continued

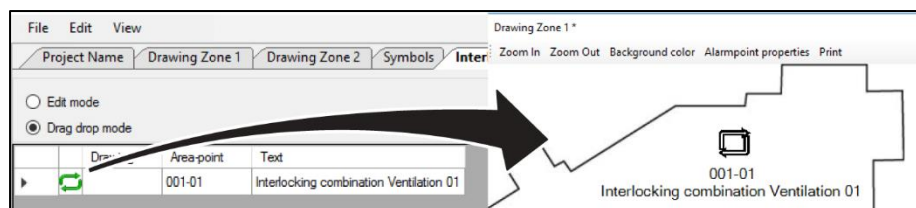
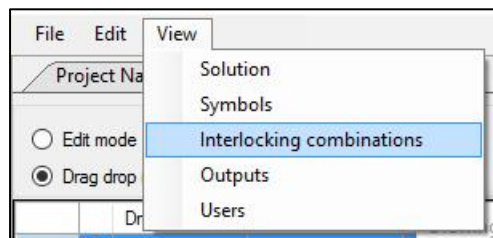
e) To add instructions, set the Symbols window to 'Edit mode'. Enter instructions.



3.7.3. ADD INTERLOCKING SYMBOL

Add the interlocking symbol on the drawing to be able to view activation of corresponding interlocking combination.

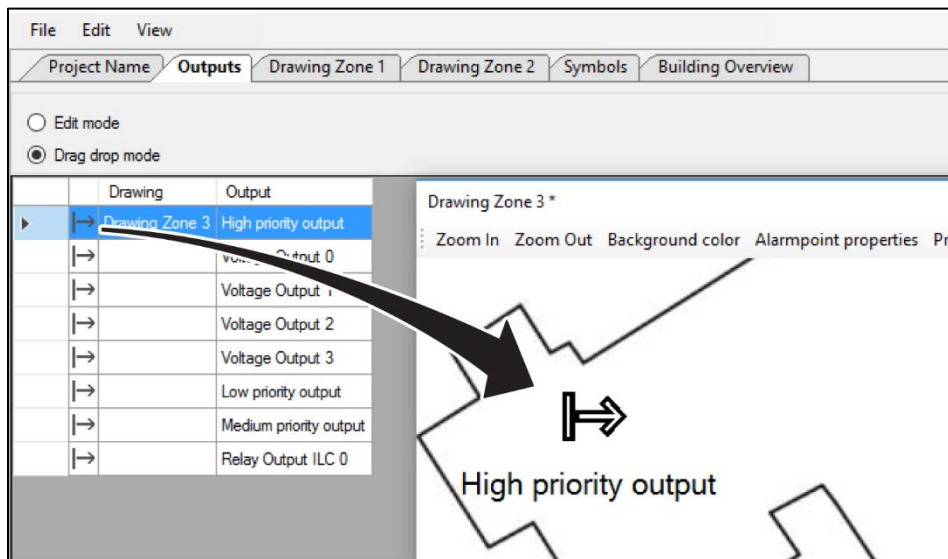
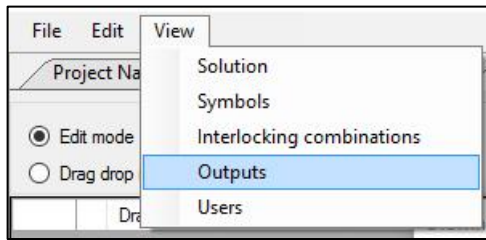
See also section 4.4.7 INTERLOCKING COMBINATION IN DRAWING VIEW.



3 EBL GRAPHICS DESIGNER

3.7.4. ADD OUTPUT SYMBOL

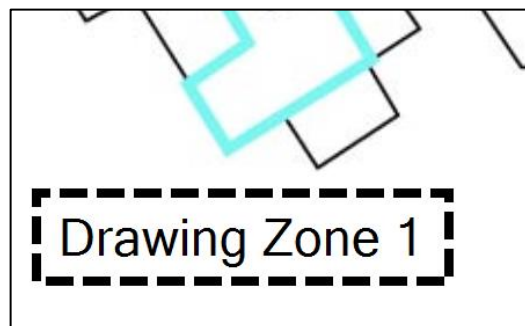
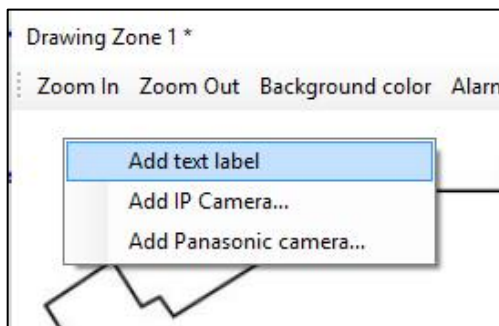
Add the output symbol on the drawing to be able to view activation of corresponding output.
See also section [4.4.8 OUTPUT IN DRAWING VIEW](#).



3.7.5. ADD TEXT LABEL

Add a descriptive text on the drawing.

- Right click in the drawing and choose "Add text label".
- Drag the text label into position.

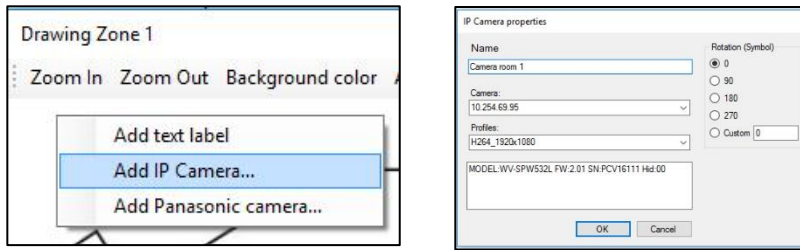


3.7.6. ADD IP CAMERA

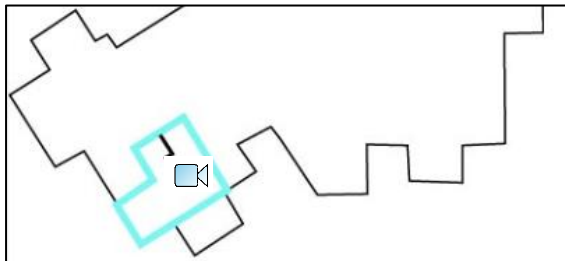
It is possible to add an IP camera to EBL Graphics. The IP camera will be “connected” to one or several alarm points. When the properties of an alarm point are displayed, the view of the network camera will also be displayed.

NOTE! For information on configuration data, contact the site system administrator.

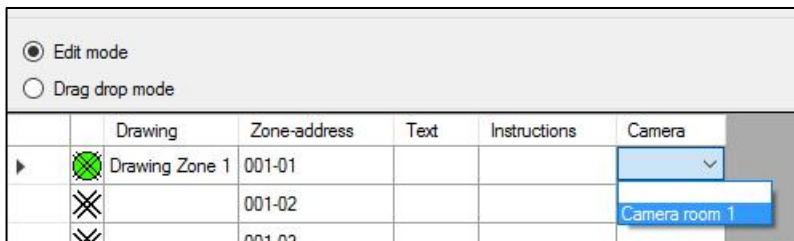
- a) Right click in the drawing and choose “Add IP Camera”.
- b) For the IP Camera properties, the network is scanned for possible IP cameras. Fill out the IP camera name. There is a possibility to change the angle of the camera symbol. Press **OK**.



- c) The network camera symbol appears. Drag the camera symbol into position.



- d) In the symbol window, click in the camera column and choose the network camera. The network camera is now connected to the alarm point on that row.



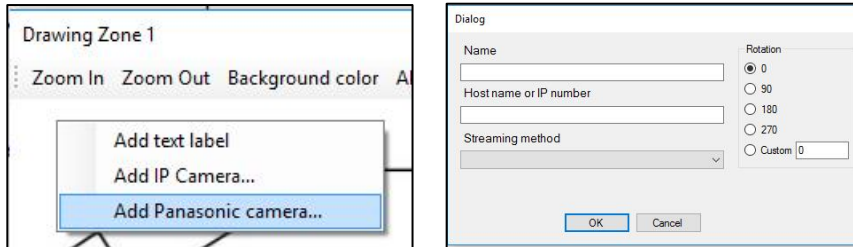
- e) Repeat for all other alarm points that shall be connected to the camera. To remove the camera, select “blank” in the drop down.

3.7.7. ADD A PANASONIC NETWORK CAMERA

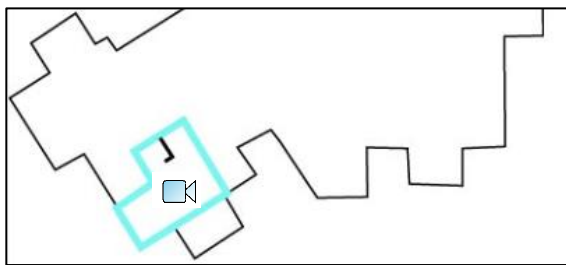
It is possible to add a network camera to EBL Graphics. The network camera will be “connected” to one or several alarm points. When the properties of an alarm point are displayed, the view of the network camera will also be displayed.

NOTE! For information on configuration data, contact the site system administrator.

- a) Right click in the drawing and choose “Add Panasonic camera”.
- b) Fill out the network camera configuration. There is a possibility to change the angle of the camera symbol. Press **OK**.



- c) The network camera symbol appears. Drag the camera symbol into position.



- d) In the symbol window, click in the camera column and choose the network camera. The network camera is now connected to the alarm point on that row.

		Drawing	Zone-address	Text	Instructions	Camera
<input checked="" type="radio"/>	Edit mode					
<input type="radio"/>	Drag drop mode					
▶		Drawing Zone 1	001-01			▼ Camera room 1
			001-02			
			001-03			

- e) Repeat for all other alarm points that shall be connected to the camera.
To remove the camera, select “blank” in the drop down.

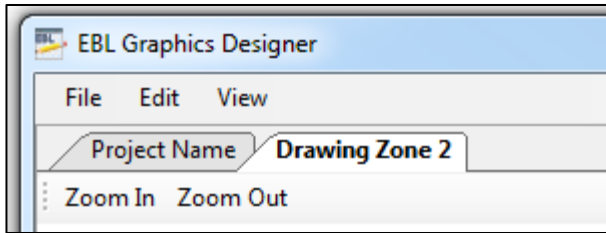
3 EBL GRAPHICS DESIGNER

3.7.8. PLACE SYMBOLS

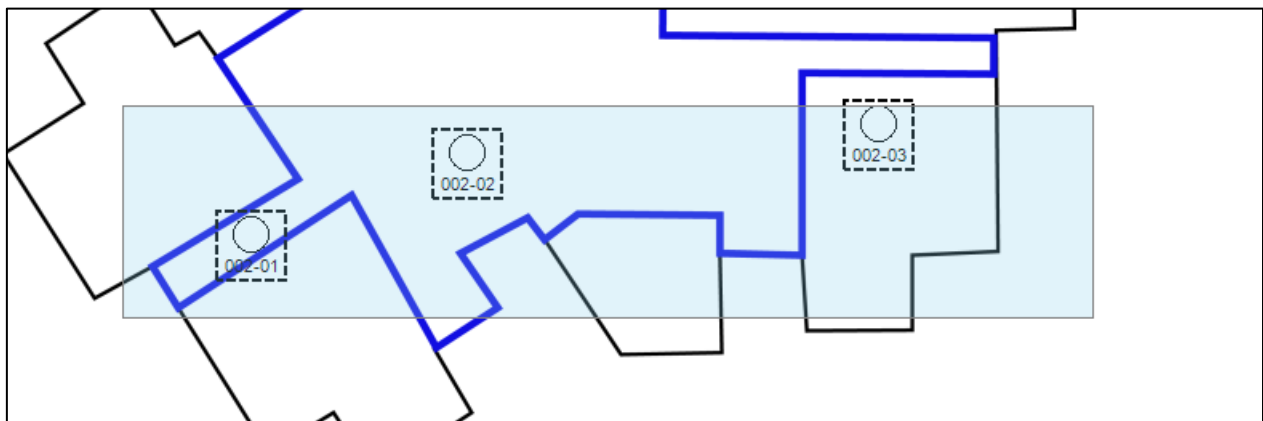
This function is useful if the symbols on the drawing should be placed on a straight line.

NOTE! This function can only be used when the drawing window is attached to the main window, as a tab.

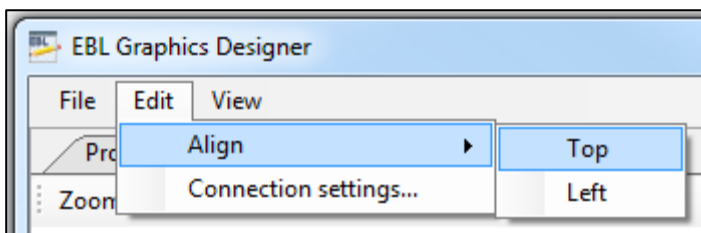
- a) To attach the drawing window to the main window, drag the drawing window and drop it onto another, existing tab. In this example `Project Name` tab.



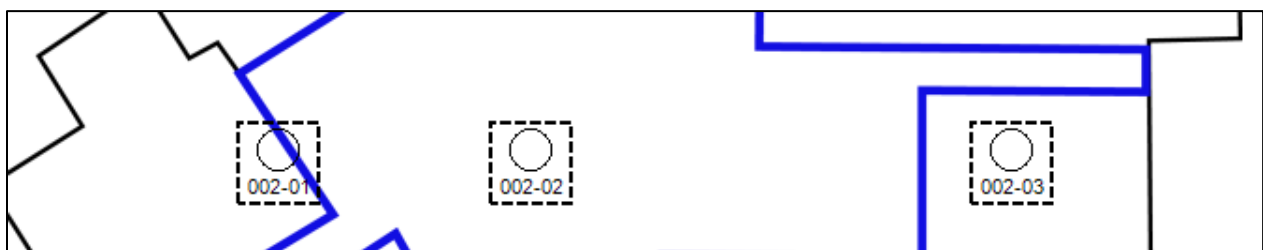
- b) Select all the symbols that should be placed on a straight line. To select several symbols, left click and select the entire area around the symbols.



- c) Go to **Edit** menu / **Align** and choose **Top** or **Left**.



- d) If Top is chosen, the selected symbols will move and be positioned on a horizontal line. The symbols will adjust to the same height as the highest positioned symbol.

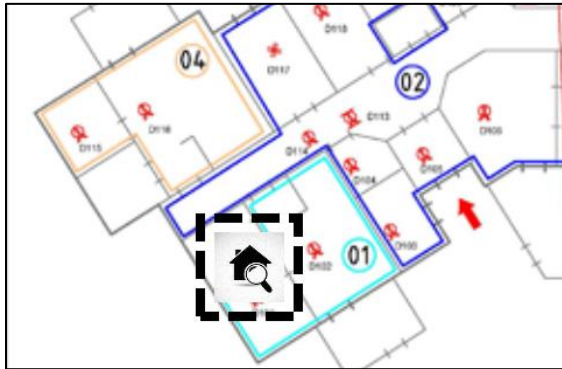


3 EBL GRAPHICS DESIGNER

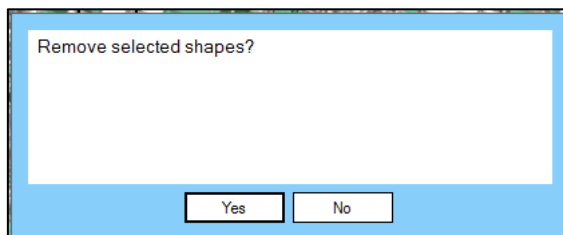
3.7.9. DELETE SYMBOLS

This procedure is valid for network camera symbols, alarm point symbols, interlocking combinations, outputs and text labels.

- a) To delete a symbol, select the symbol. The symbol will get a dashed frame. Press **Delete**.

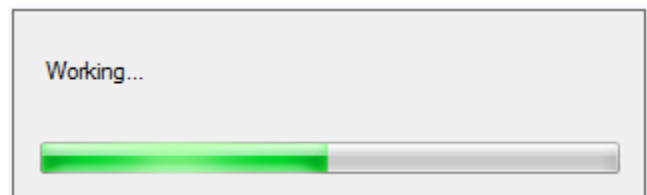
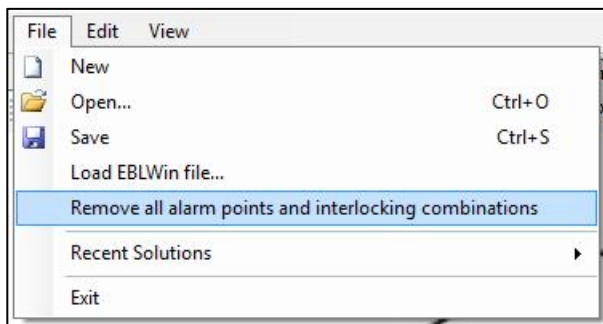


- b) In the dialog window, press **Yes**.



3.7.10.REMOVE ALL ALARM POINTS

- a) Go to **File** menu / **Remove all alarm points and interlocking combinations**. (Including outputs)
- b) All alarm points, interlocking combinations, and outputs in all drawings will be deleted. Also the Symbols window will be deleted.



3.8. GRAPHIC EFFECTS

There is a possibility to customize the drawings in EBL Graphics Designer. It can be used to distinguish different zones or different drawings from each other by colour.

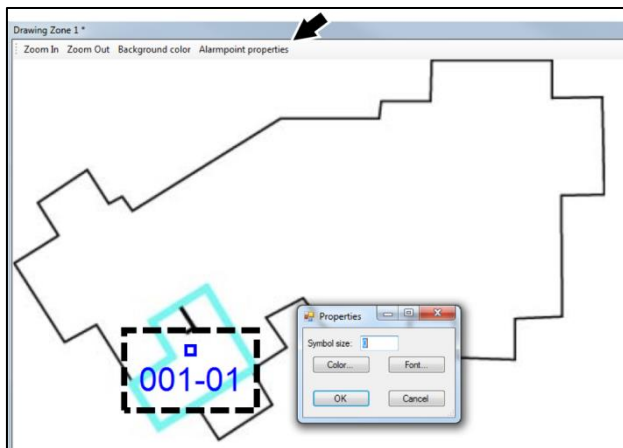
3.8.1. EDIT ALARM POINT SYMBOLS

Click on "Alarm point properties" in the drawing window or double click the alarm point symbol. Set:

- Symbol size (measured in points)
- Font size (measured in points)
- Symbol / Font color

This procedure will change the properties only for the selected alarm point.

NOTE! This color setting is visible for the alarm point in normal state.



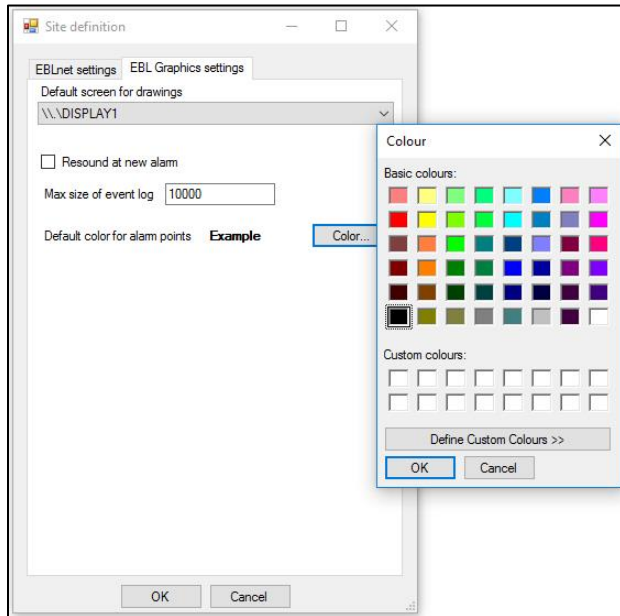
3 EBL GRAPHICS DESIGNER

3.8.2. EDIT DEFAULT COLOR FOR ALARM POINT SYMBOLS

Go to Edit/Connection settings/EBL Graphics settings/Default color for alarm points.

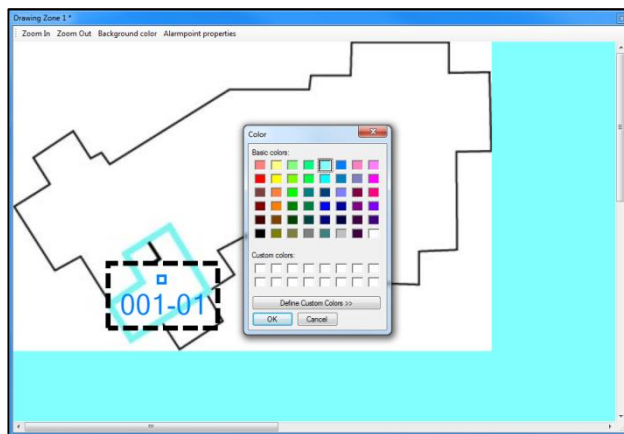
First choose a color, then add the alarm points. All the added alarm points will get the chosen color, until another color is chosen in the dialog.

NOTE! This color setting is visible for the alarm point in normal state.



3.8.3. EDIT BACKGROUND COLOR

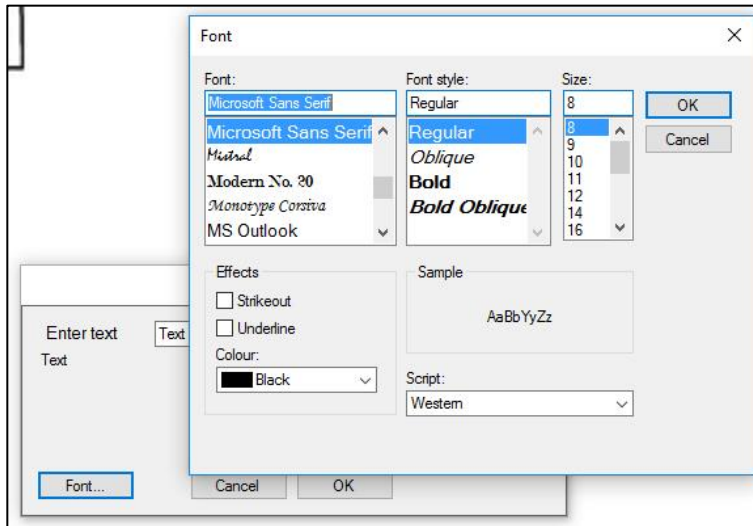
Click on "Background color" in the drawing window



3 EBL GRAPHICS DESIGNER

3.8.4. DESIGN TEXT LABEL

When adding the text label, enter the text, then click on “Font...”



3.8.5. ADD CUSTOM ICONS

EBL Graphics can use custom icons from a folder “icons” in the applications install folder. Find the “icons” folder here: C:\ProgramData\Panasonic Fire and Security\EBL Graphics\Icons. Place the image files in the “icons” folder and name them as follows:

- | | | |
|-------------------------|---------------------|---------------------|
| SystemNormal.X | HeatNormal.X | MCPNormal.X |
| SystemPreWarning.X | HeatPreWarning.X | MCPPreWarning.X |
| SystemFire.X | HeatFire.X | MCPFire.X |
| SystemDisabled.X | HeatDisabled.X | MCPDisabled.X |
| SystemFireDisabled.X | HeatFireDisabled.X | MCPFireDisabled.X |
| SmokeNormal.X | HeatAcknowledged.X | MCPAcknowledged.X |
| SmokePreWarning.X | MultiNormal.X | OtherNormal.X |
| SmokeFire.X | MultiPreWarning.X | OtherPreWarning.X |
| SmokeDisabled.X | MultiFire.X | OtherFire.X |
| SmokeFireDisabled.X | MultiDisabled.X | OtherDisabled.X |
| SmokeFireAcknowledged.X | MultiFireDisabled.X | OtherFireDisabled.X |
| | MultiAcknowledged.X | OtherAcknowledged.X |

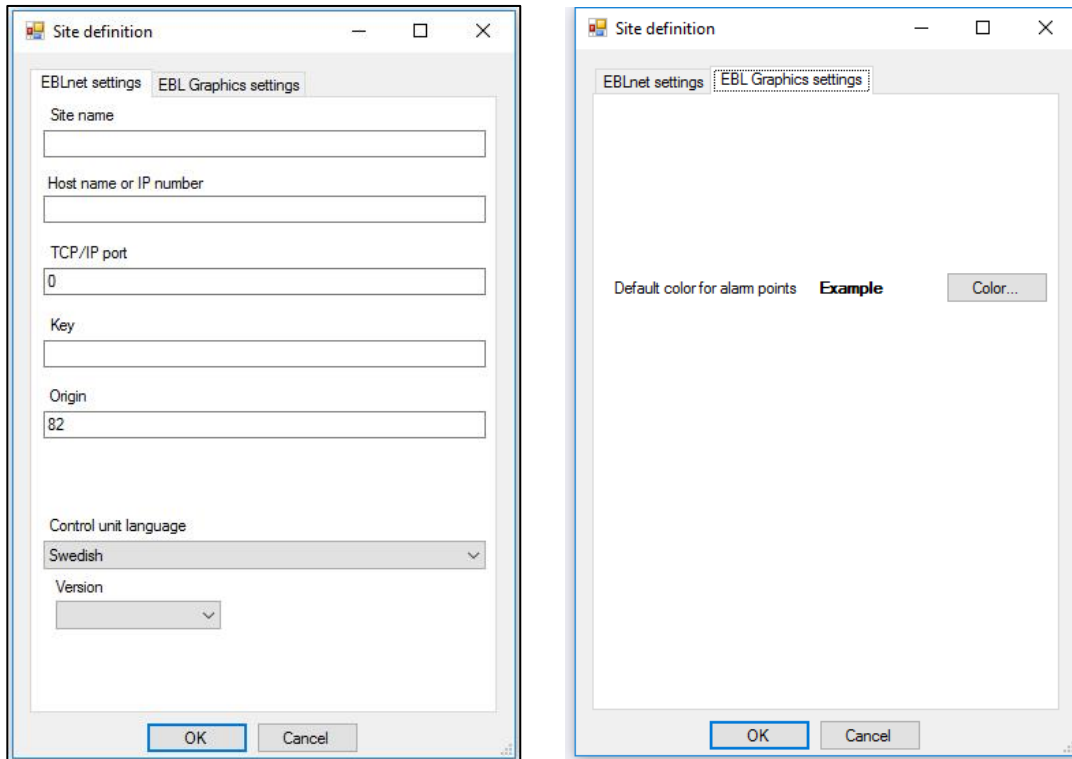
X = BMP, GIF, JPEG, PNG, or TIFF

If any of the custom images are missing in the folder, the system will use the default shapes.

3.9. EBLNET CONFIGURATION

NOTE! For information on configuration data, contact the site system administrator.

- a) Go to **Edit** menu / **Connection settings...** The web configuration must be done to be able to connect to the actual EBL system.

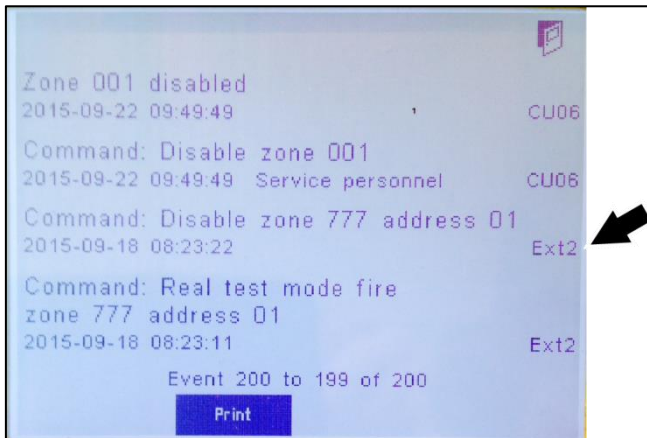


- b) Fill out the dialog window 'Site definition'.

3 EBL GRAPHICS DESIGNER

3.9.1. EBLNET SETTINGS

- **Site name** – Where the actual EBL system is situated
- **Host or IP number** – Web-server connected to the EBL system
- **TCP / IP Port** – Is found in EBLWin, EBLnet settings for the web-server.
Make sure “Use EBL net” in EBLWin is checked.
- **Key** – Valid EBLnet license key number.
- **Origin** – 80 to 89. Defines the origin code for the event log in the Control Unit.
80 will generate origin code Ext0 in menu U7 Event log
81 will generate origin code Ext1 in menu U7 Event log, and so on.
In the example below, 82 is chosen.



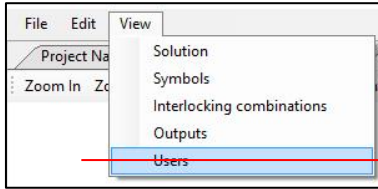
- **Control unit language** – Choose same as in the EBL system
- **Version** – The version used in the EBL system

3.9.2. EBL GRAPHICS SETTINGS

- **Default color for alarm points** – See [3.8.2 EDIT DEFAULT COLOR FOR ALARM POINT SYMBOLS.](#)

3.10. USER CONFIGURATION

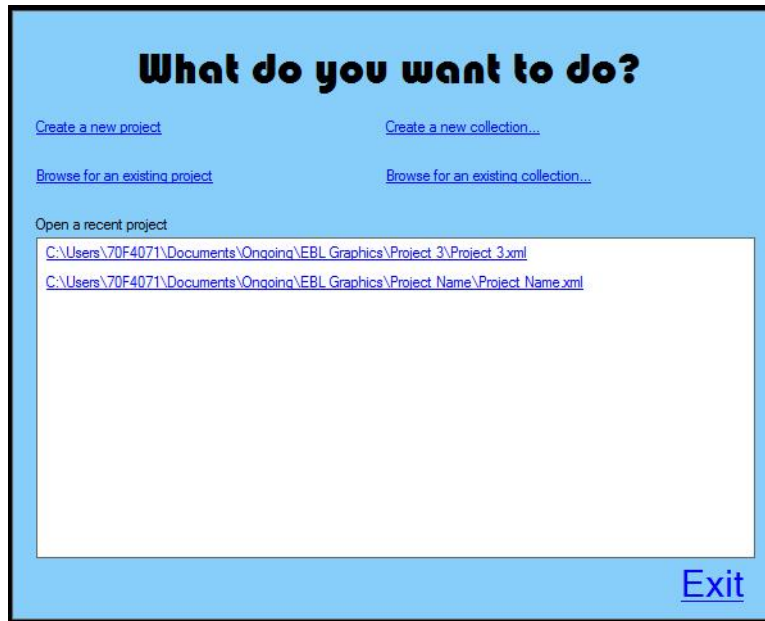
From version 2.4.x of EBL Graphics, it is not necessary to add user configuration for the projects. This information is added in the Collection Manager for the entire collection. Only the user information in the Collection Manager is used. See [3.11 CREATE A COLLECTION](#).



3.11. CREATE A COLLECTION

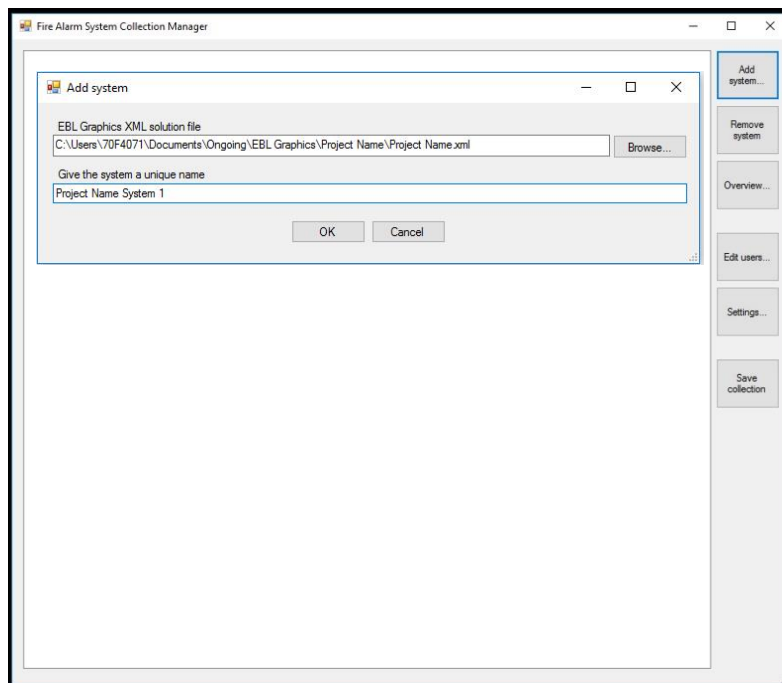
When the project(s) is created, it must be added into a collection. Close the project(s).

- a) Select "Create a new collection".



Fire Alarm System Collection Manager window will open.

- b) Press "Add system...". Browse for the .xml files of the projects that shall be included in the collection.



3 EBL GRAPHICS DESIGNER

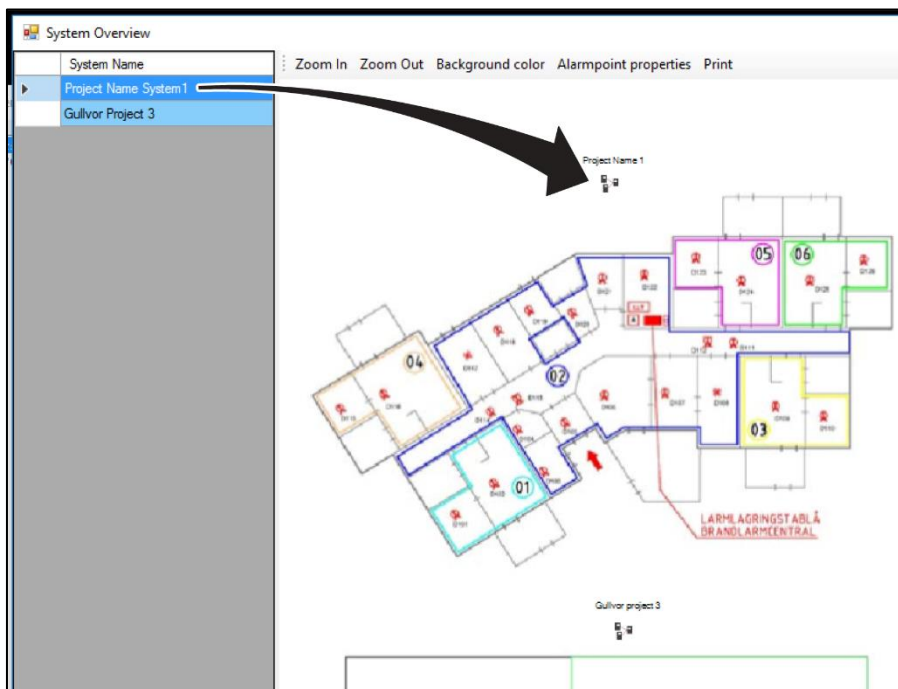
- c) To delete a project from the list, select the project row and press “Remove system”.



- d) Press “Overview...”.

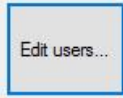


- e) Insert an overview drawing into the “System Overview” window. “Drag and drop”.
- f) “Drag and drop” the project(s) into the drawing.
- g) It is also possible to add text labels into the system overview drawing.



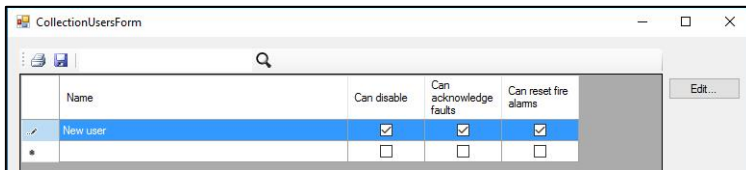
3 EBL GRAPHICS DESIGNER

h) Press “Edit users...”.



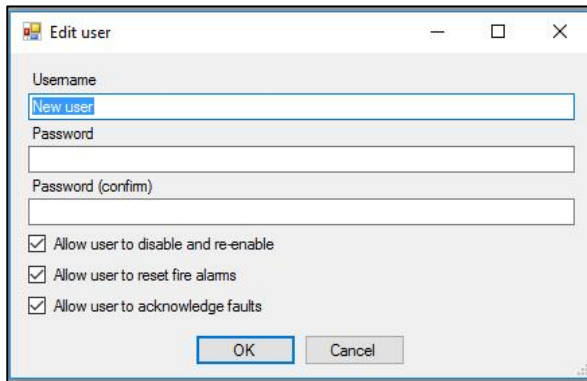
i) Click in the field 'New user'. Write the user name. Press **Enter**.

j) Click on the left edge of the row (cell with a small arrow) to make the entire row blue. See the picture below.



k) Press **Edit...**

l) Fill out the dialog window. Press **OK**.

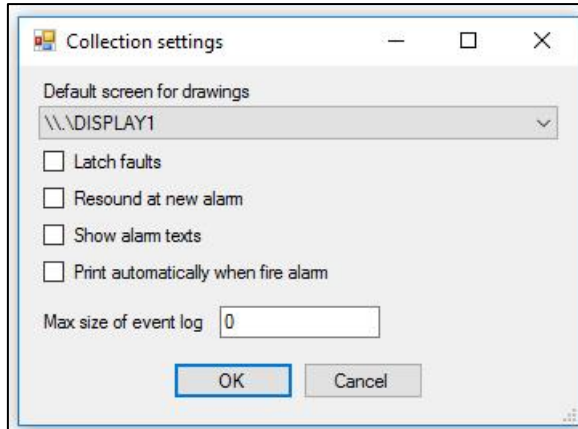


3 EBL GRAPHICS DESIGNER

- m) Press “Settings...”.



- n) Fill out the “Collection settings” dialog.



- o) Press “Save collection” and save as....



- p) Close the Collection manager with X in upper right corner.

4. EBL GRAPHICS

4.1. GENERAL DESCRIPTION

This application provides the functionality to:

- Monitor alarms and disablements on drawings
- Monitor all deviations in the deviations view
- Perform alarm reset and disablement / re-enablement in drawings
- Perform alarm reset, re-enablement, acknowledge faults in the deviations view.

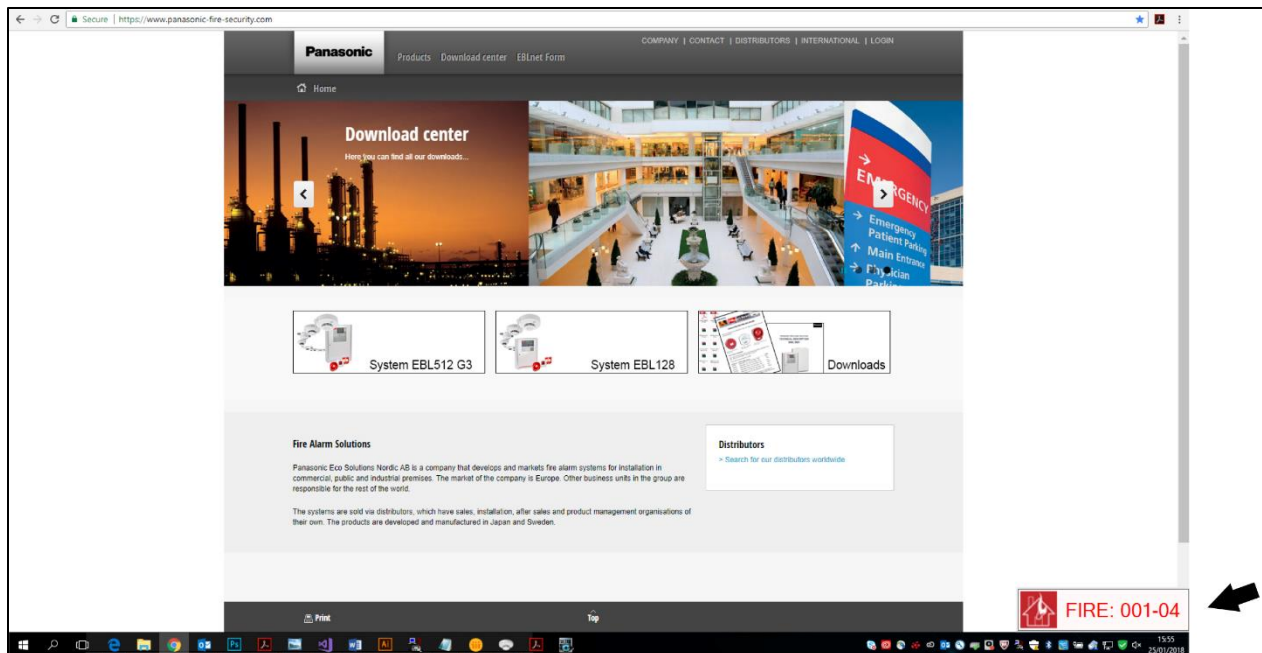
ALERT AT FIRE ALARM

When a fire alarm occurs, the EBL Graphics will alert on the main display of the PC.

No matter what program or webpage is displayed at the moment, the EBL Graphics will break in and a message will be displayed in the lower right corner.

EBL Graphics will generate sound for fire alarm and faults.

If the PC is connected to a printer, EBL Graphics will automatically print a drawing with an alarm point set into fire alarm state.

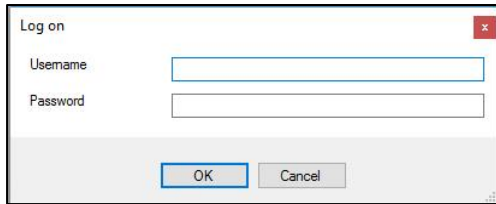


4 EBL GRAPHICS

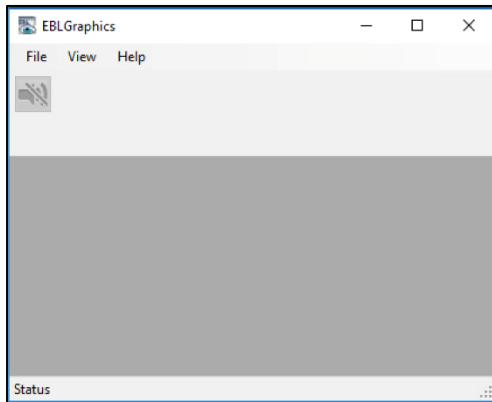
4.2. STARTING UP

When starting EBL Graphics you are requested to open a collection.eblcol file created in EBL Graphics Designer.

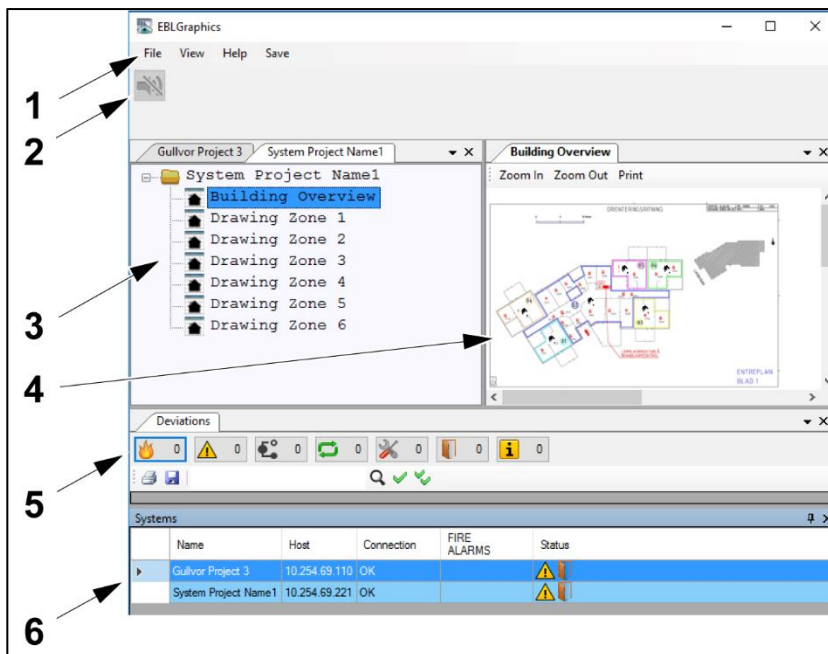
- a) Choose a collection file. Press **Open**.
- b) Log on. The user name and password has been set in EBL Graphics Designer.
See section 3.11 CREATE A COLLECTION.



- c) The default window layout appears. See below.



- d) To open the projects and make functions visible, select **View** menu.



- 1) Menu bar
- 2) Tool strip
- 3) Tree view
- 4) Drawing view
- 5) Deviations view
- 6) System list

4 EBL GRAPHICS

4.3. TOOL STRIP



Press this symbol to silence an active fire alarm. The symbol turns yellow when activated. It is possible to configure it to re-sound at a new incoming fire alarm.



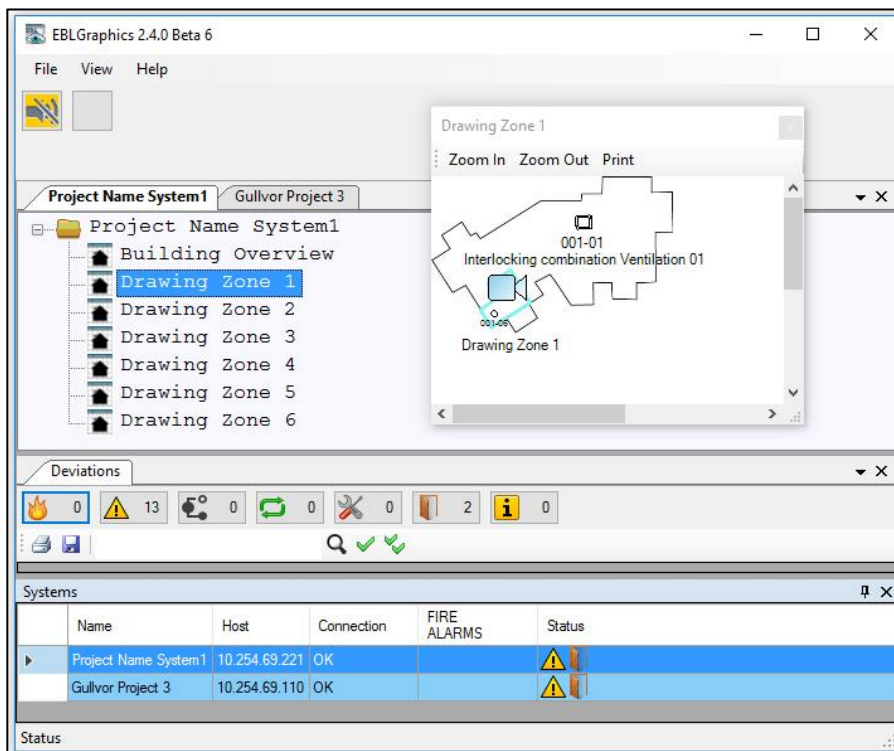
The symbol indicates if the web server connection has failed. The symbol turns yellow when activated.



This symbol indicates fire alarm state. It is only visible during fire alarm.

4.4. DRAWING VIEW

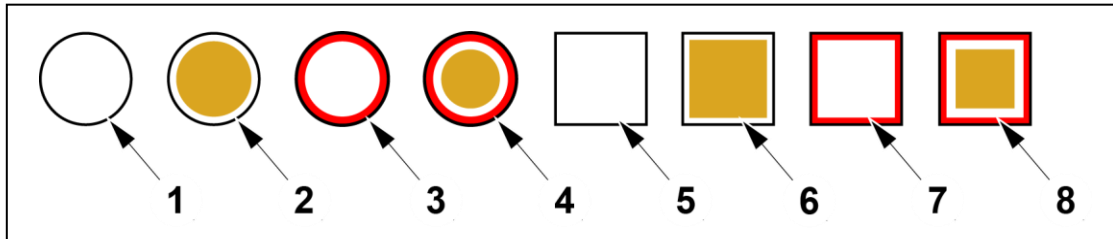
Double click a **drawing node** in the tree view to open a drawing. It is possible to zoom in and out and scroll in a drawing. The drawing is dockable. It is possible to drag a drawing into another screen, if there are multiple screens.



4 EBL GRAPHICS

4.4.1. ALARM POINT SYMBOLS

The alarm point symbols on the drawing change their appearance depending on their state. See below.



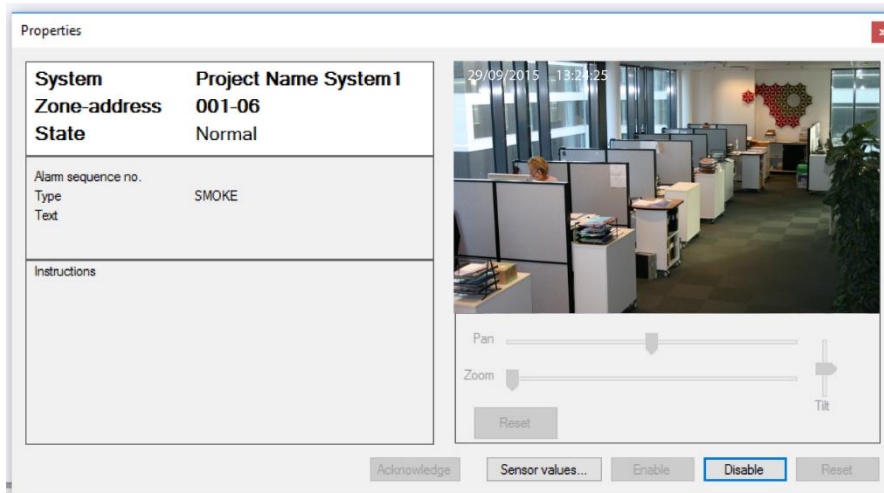
- 1) Detector – Not activated
- 2) Detector – Disabled
- 3) Detector –Pre-warning (steady) or Alarm state (flashing intermittent)
- 4) Detector – Disabled and Alarm state (flashing intermittent)
- 5) Manual Call Point – Not activated
- 6) Manual Call Point – Disabled
- 7) Manual Call Point – Alarm state (flashing intermittent)
- 8) Manual Call Point – Disabled and Alarm state (flashing intermittent)

NOTE! This is valid unless customized icon are used. Customized symbols must be named according to 3.8.5 ADD CUSTOM ICONS to show different states.

4 EBL GRAPHICS

4.4.2. ALARM POINT PROPERTIES

- a) Double-click an **alarm point** symbol on the drawing to display the **Properties** window for that alarm point. If there is a network camera connected to this alarm point, the camera view will also be displayed. There is support to pan, zoom, or tilt a camera.
- System
 - Zone-address
 - State – Normal / Disabled / Fire Alarm
 - Alarm sequence number – displayed during fire alarm
 - Type – Smoke /Heat / Multi / MCP / Others
 - Text – configured in EBLWin
 - Instructions – configured in EBL Graphics Designer



4 EBL GRAPHICS

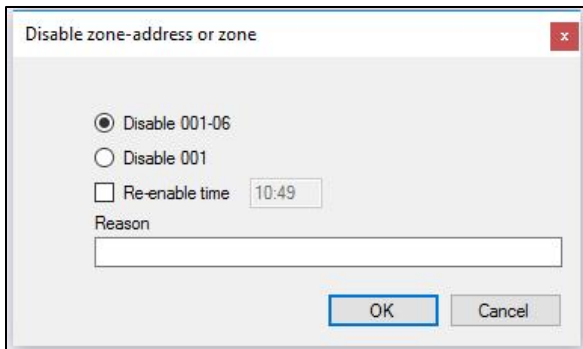
4.4.3. SENSOR VALUES...

Press **Sensor values...** in the Properties window, and the tab `Sensor log, technical number...` will show. The sensor value is logged every 7:th second.

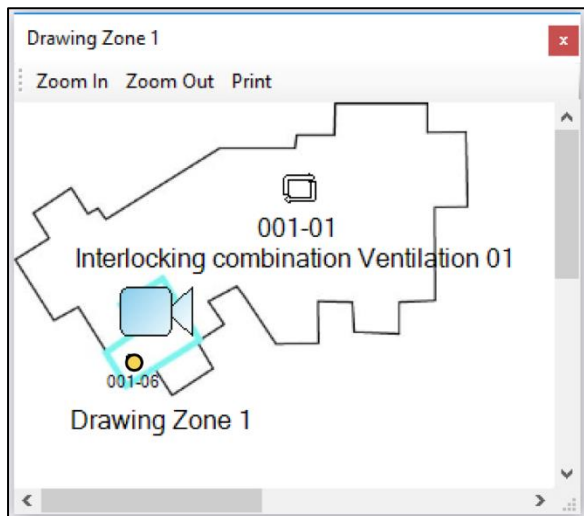
Time	Technical number	Momentary (heat)	Min (heat)	Max (heat)
26/01/2018 08:27:02	001062	22.5	22	23
26/01/2018 08:27:09	001062	22.5	22	23
26/01/2018 08:27:16	001062	22.5	22	23
26/01/2018 08:27:24	001062	22.5	22	23
26/01/2018 08:27:30	001062	22.5	22	23
26/01/2018 08:27:37	001062	22.5	22	23

4.4.4. DISABLE ALARM POINT IN DRAWING VIEW

- a) Press **Disable** in the Properties window.
- b) In the dialog window, choose to disable the alarm point or the entire zone.
- c) Enter a reason text for the disablement (optional). The reason text will be logged into the event log of EBL Graphics.
- d) Press **OK**.

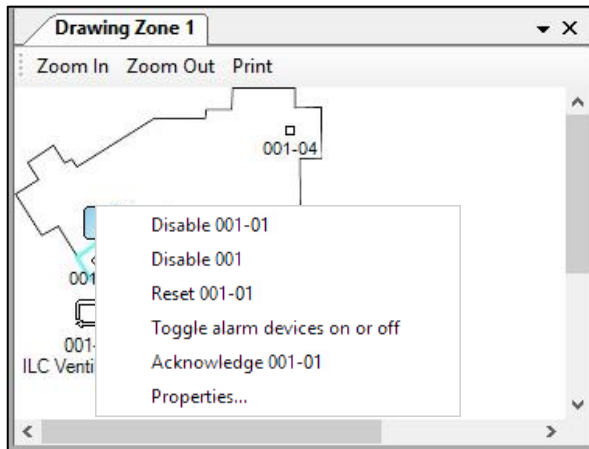


- e) The appearance of the alarm point symbol on the drawing has changed. The Properties window has changed the state to Disabled.



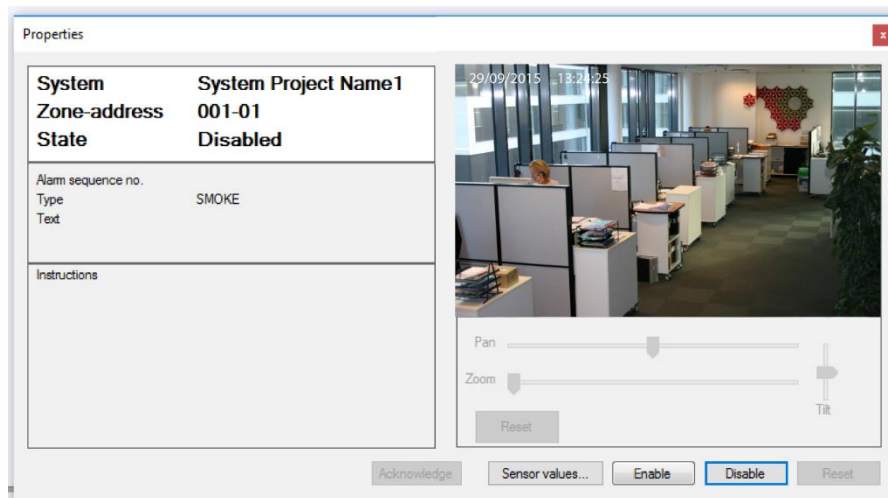
4 EBL GRAPHICS

NOTE! It is possible to **right-click** on an alarm point symbol to access **Disable** and **Properties**. It is also possible to reset an alarm point if it is in fire alarm state.



4.4.5. RE-ENABLE ALARM POINT IN DRAWING VIEW

a) To re-enable the alarm point, press **Enable**. Press **OK** in the dialog window.

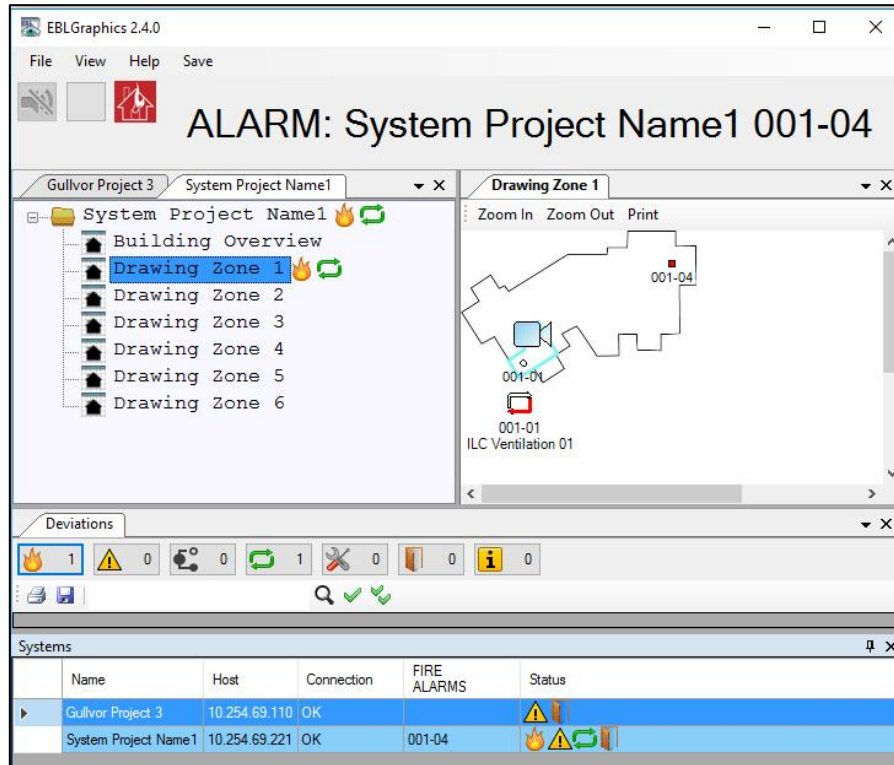


4 EBL GRAPHICS

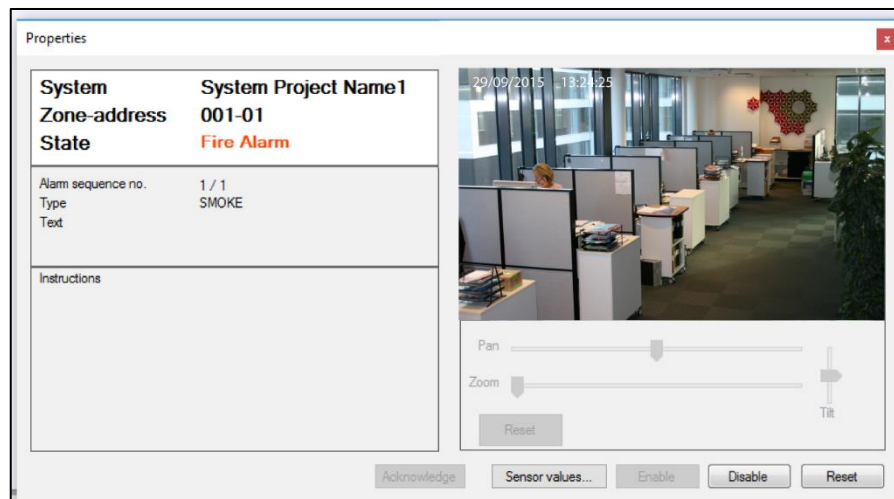
4.4.6. RESET ALARM IN DRAWING VIEW

When a fire alarm has occurred, the alarm point that is in alarm state changes appearance.

- a) Double-click the **alarm point** symbol on the drawing to display the **Properties** window for that alarm point.



- b) Press **Reset**. Press **YES** to confirm.

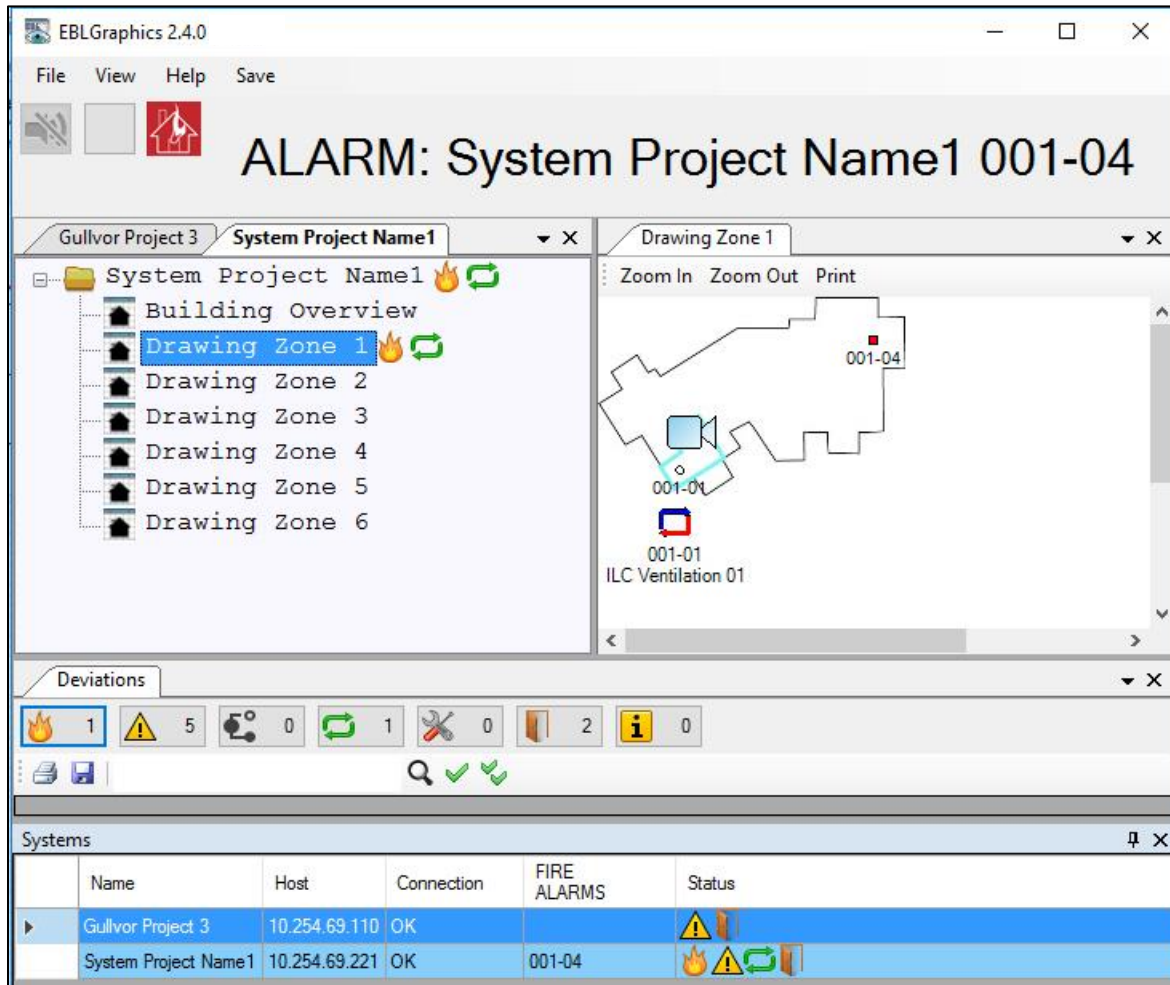


4.4.7. INTERLOCKING COMBINATION IN DRAWING VIEW

An interlocking combination in a drawing, will change colour and start to flash when activated.

Lower arrow turns red: The output is activated.

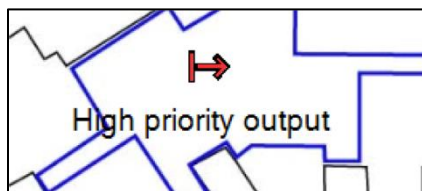
Upper arrow turns blue: The input is activated.



4.4.8. OUTPUT IN DRAWING VIEW

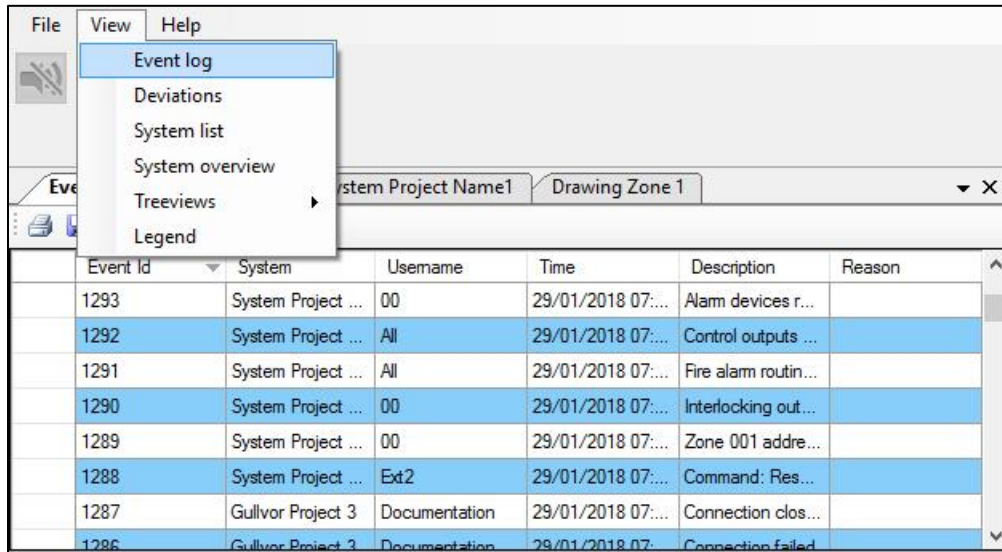
An output in a drawing will change color during forced activation, such as test of alarm devices. **Right-click** on the output symbol to **activation / deactivation** the output.

The arrow turns red and starts to flash: The output is activated.



4.5. EVENT LOG

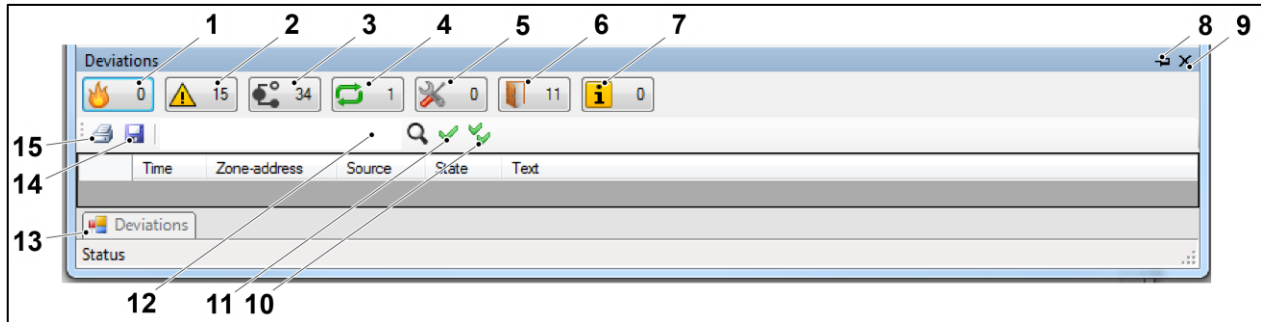
Go to **View** menu / **Event log** to see a list with all events in the system. The number of events shown in the list is configured in EBL Graphics Designer.



4.6. DEVIATIONS VIEW

Go to **View** menu / **Deviations** to open the Deviations view. The functionality of the Deviations window is similar to the one in EBLWin. (See the Planning Instructions for your system.)

In the Deviations view, it is possible to double click on a row with an alarm point in the list to open the corresponding drawing.

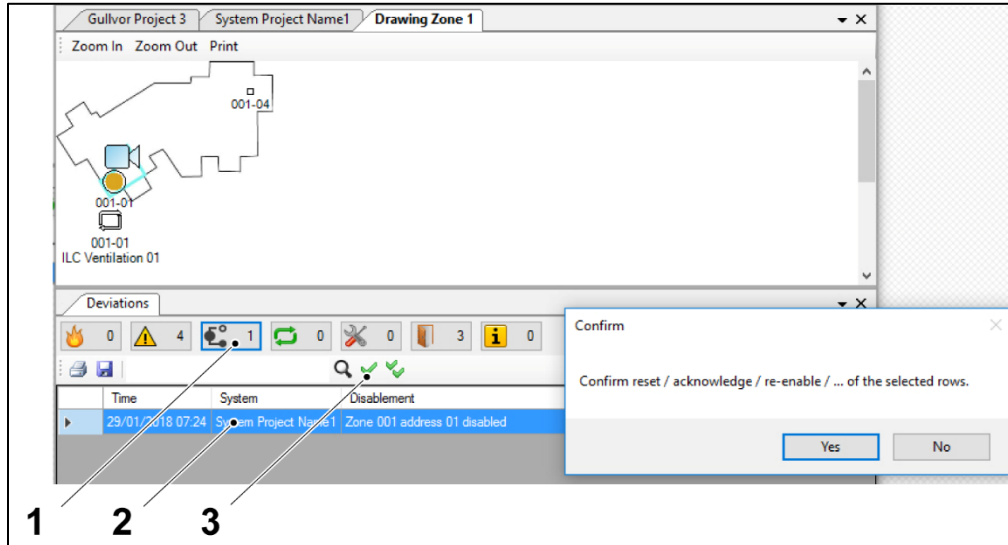


- 1) Fire Alarm
- 2) Fault
- 3) Disabling
- 4) Activated interlocking combinations
- 5) Service signal
- 6) Open doors
- 7) Technical warning
- 8) Auto Hide – Closes automatically the Deviations view
- 9) Close
- 10) Acknowledge / reset / re-enable all
- 11) Acknowledge / reset / re-enable selected
- 12) Search
- 13) Deviations tab (Used in Auto Hide mode)
- 14) Save
- 15) Print

4 EBL GRAPHICS

4.6.1. RE-ENABLE ALARM POINT IN DEVIATIONS VIEW

- a) Select **Disablesments** (1).
- b) Select the disabled alarm point in the **list** (2).
- c) Press **re-enable** (3).
- d) Press **YES** in the dialog window to confirm.

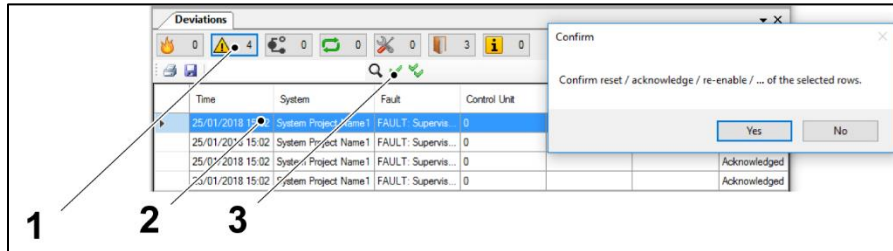


- 1) Disablesments
- 2) List
- 3) Acknowledge / reset / re-enable

4 EBL GRAPHICS

4.6.2. ACKNOWLEDGE FAULTS IN DEVIATIONS VIEW

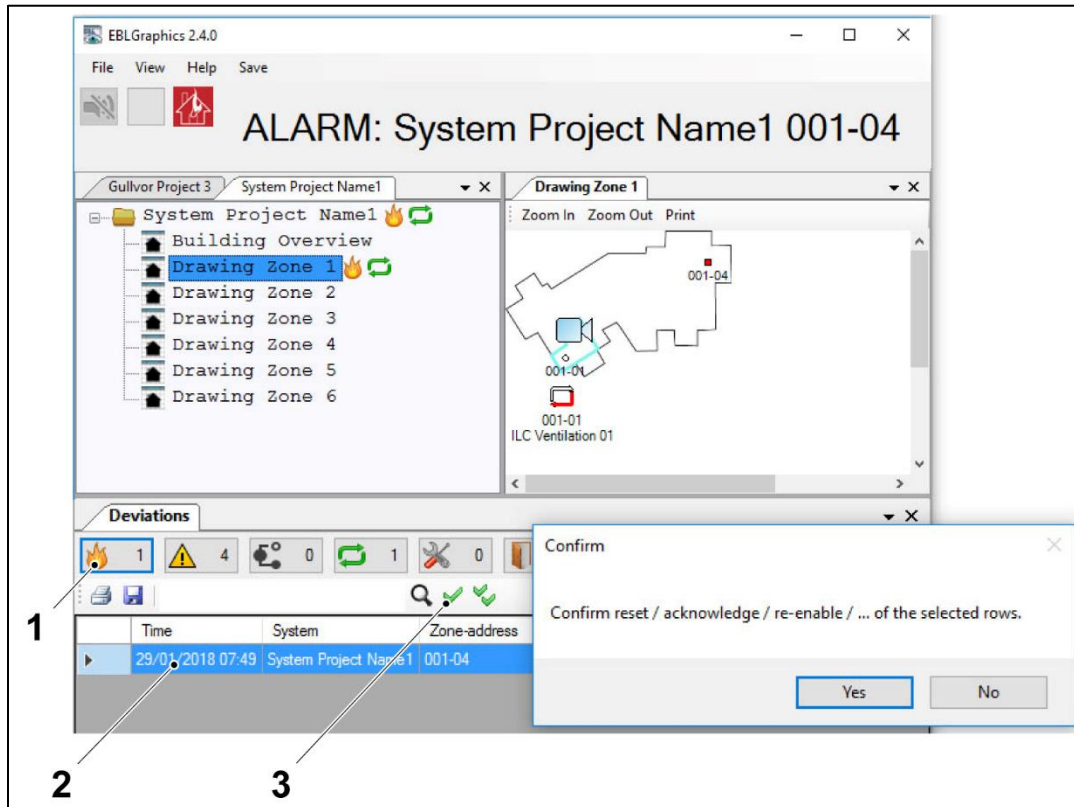
- a) Select **Faults** (1).
- b) Select the alarm point which is in alarm state in the **list** (2).
- c) Press **Acknowledge** (3).
- d) Press **YES** in the dialog window to confirm



- 1) Faults
- 2) List
- 3) Acknowledge / reset / re-enable

4.6.3. RESET ALARM IN DEVIATIONS VIEW

- a) Select **Fire Alarm**(1)
- b) Select the alarm point which is in alarm state in the **list** (2).
- c) Press **reset** (3).
- d) Press **YES** in the dialog window to confirm



- 1) Fire Alarm
- 2) List
- 3) Acknowledge / reset / re-enable

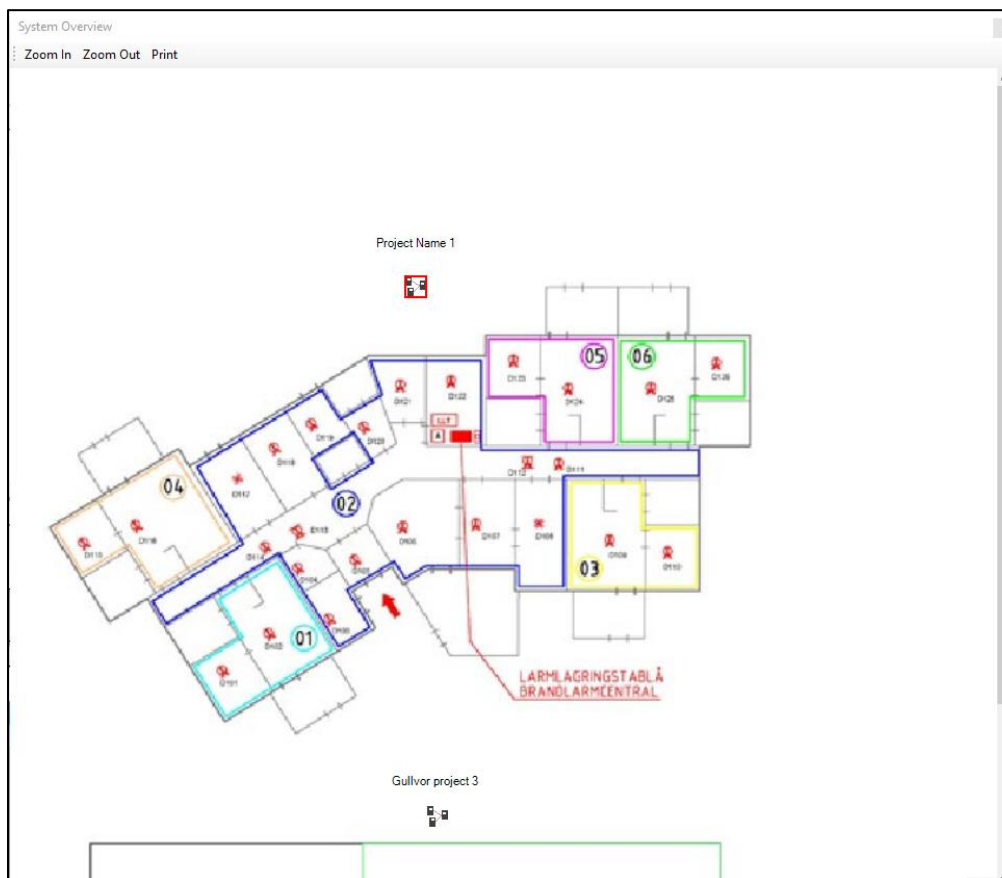
4.7. SYSTEM LIST

Go to **View** menu / **System list** to open the System list view.

Systems					
	Name	Host	Connection	FIRE ALARMS	Status
▶	System Project Name 1	10.254.69.221	OK		⚠
	Gullvor Project 3	10.254.69.110	FAULT		

4.8. SYSTEM OVERVIEW

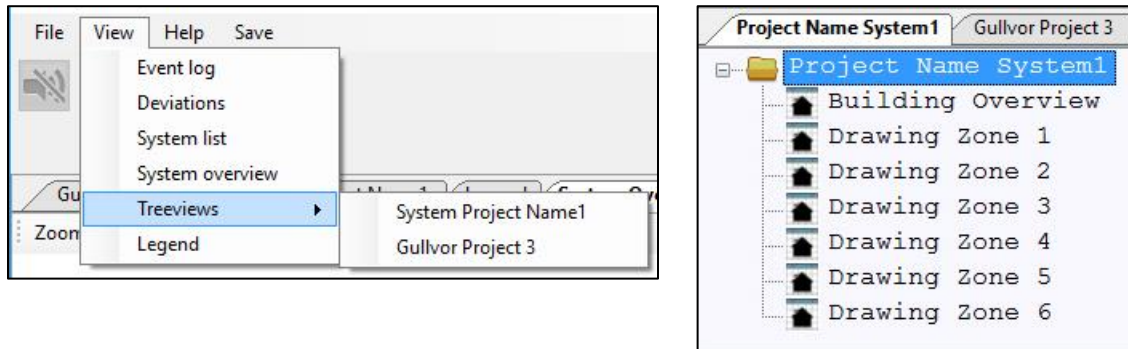
Go to **View** menu / **System overview** to open the System Overview drawing. The system symbol turns red to indicate fire alarm state.



4 EBL GRAPHICS

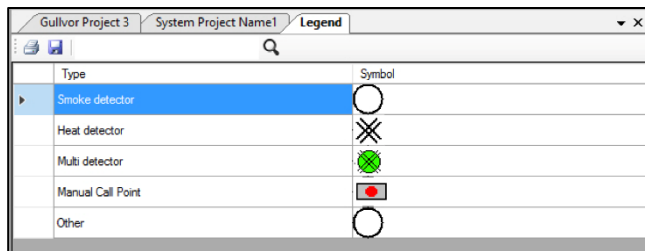
4.9. TREEVIEWS

Go to **View** menu / **Treeviews** to open the tree views of the different projects. Double click a node to open a drawing.



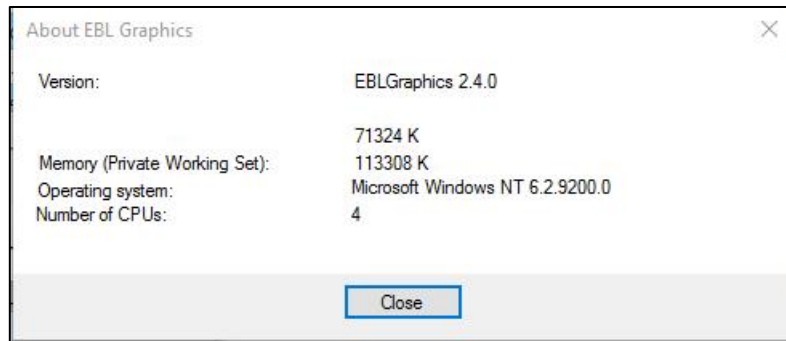
4.10. LEGEND

Go to **View** menu / **Legend** to view the symbols used in the collection. If no customized symbols are used, only circles and squares are showed here.



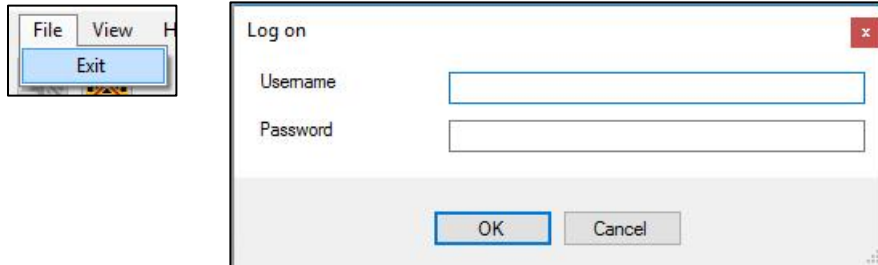
4.11. ABOUT EBL GRAPHICS

Go to **Help** menu / **About...**The dialog window show information about EBL Graphics.



4.12. EXIT EBL GRAPHICS

To exit EBL Graphics, the user must enter Log on credentials. This is to prevent EBL Graphics to accidentally be closed.



5. TECHNICAL DATA

Hardware	1598 - Web-server II
Hardware	1594 - EBLWin key (Used during configuration)
EBLnet license	1597
Web-server software:	EBLWeb for EBL512 G3: v. 1.1 v. 2.7 "United" v. 2.0 v. 2.1 v. 2.2 v. 2.3 v. 2.4 v. 2.5
Configuration	EBL Graphics Designer
Operating System	Windows ≥ Vista