

# FP-WEB2 and FP Web Expansion Unit

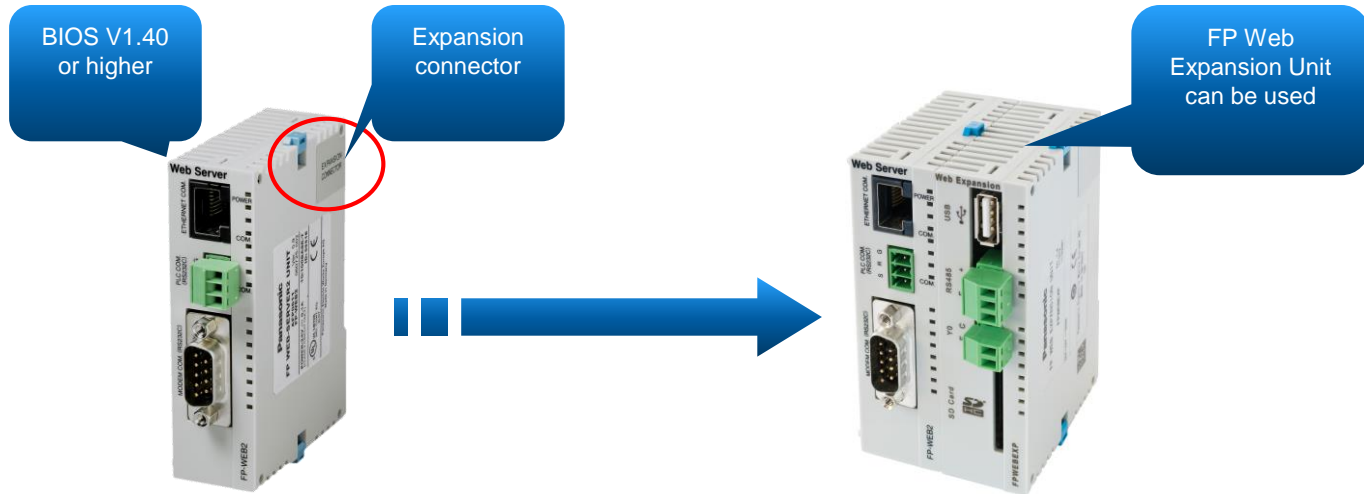
## Firmwareupdate FP Web-Server

July 2020

# General information

The FP Web Expansion Unit (FPWEBEXP) can only be used with a FP Web-Server 2 with the following configuration:

- BIOS version: at least V1.40 → Recommended V2.06 (July 2020)
- FP Web-Server 2 with a right side expansion connector  
(Web-Server with at least HW V1.1, delivered since Jan. 2011)
- FP Web-Server 2 without the expansion connector cannot use the FPWEBEXP.

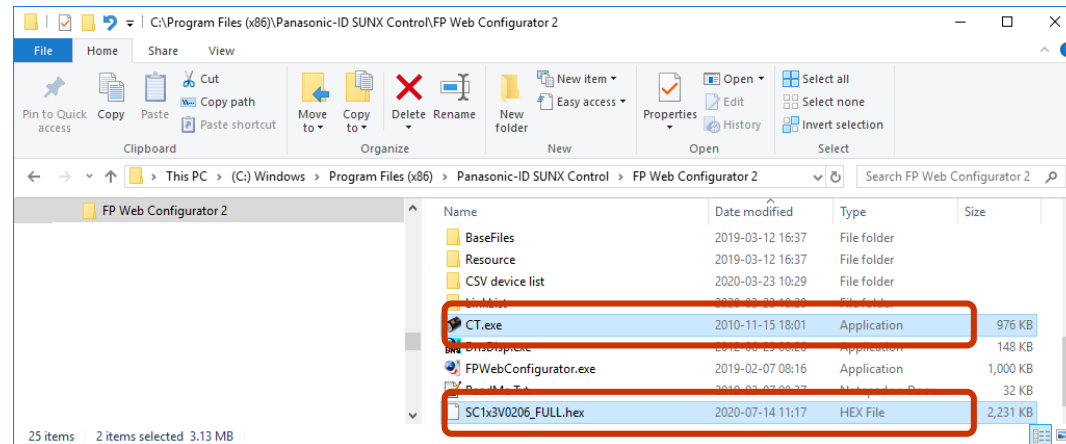


# BIOS update warning

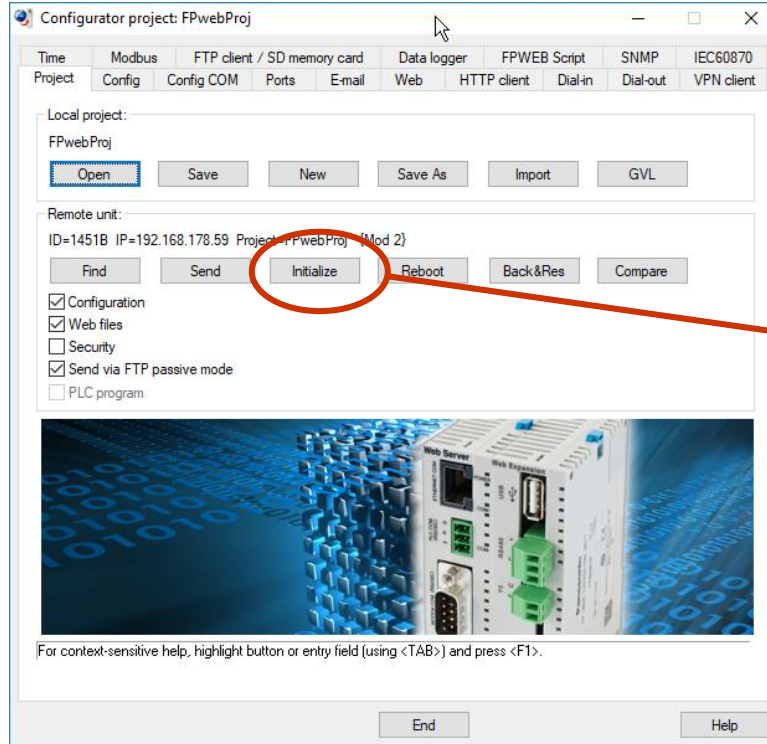
## Warning:

1. On programming a flash image all files on the internal flash disk will be erased.
2. Do not reset or power down the FP Web Server while programming a flash image.
3. Never abort the transfer of a bootloader image file

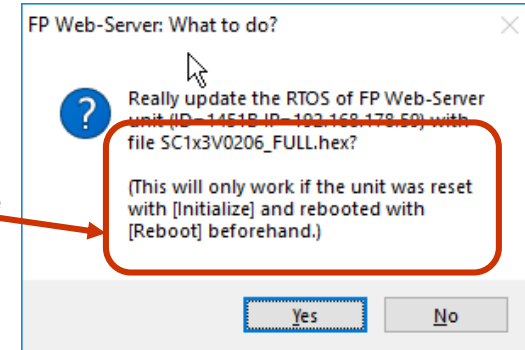
The CT.EXE and the BIOS file e.g. SC1x3V0206\_FULL.hex must be available in the install folder of the FP Web Configurator folder



# BIOS update



Press key Alt +  
Button Initialize



1. The CT.EXE application starts flashing the BIOS.
2. If the CT.EXE is completed the project files can be sent to the FP Web Server.
3. After a reset the new BIOS is running.

# **Panasonic**

A Better Life, A Better World