

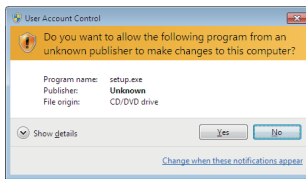
Panasonic GTWIN Installation Guide

Introduction

- Exit all applications before installing GTWIN.
- Do not connect the GT unit and a PC before installing GTWIN. A USB driver may not be automatically installed.
- For using GT series on a computer in which GTWIN Ver.2.F0 or older has been installed for the first time, a USB driver should be installed. Prepare a GT unit and USB cable, and install the driver according to "Procedure of Installing USB Driver".

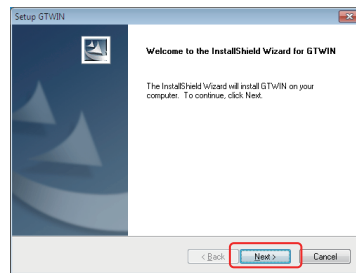
Procedure

(1) Execute [setup.exe].

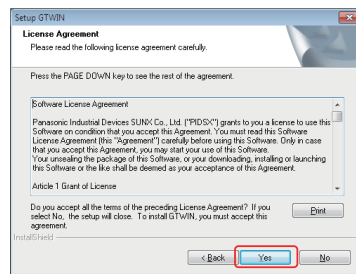


(2) When the right screen is displayed, click [Yes].

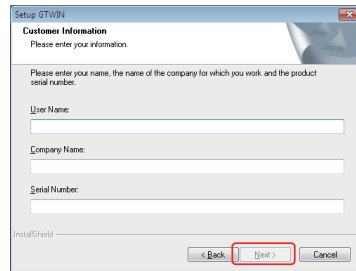
(3) The right screen is displayed. Click [Next].



(4) The right screen is displayed. Click [Yes] if you accept the license agreement. If you do not accept, click [No] to cancel the installation.



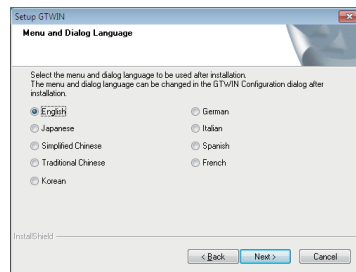
(5) The right screen is displayed. Enter [User Name], [Company Name] and [Serial Number], and click [Next].



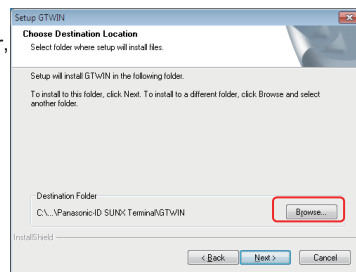
Note)

If the [Serial number] is wrong, the error message is displayed and you can not continue the installation.

(6) The right screen is displayed. Select a language on GTWIN. (The selected language can be changed in GTWIN Configuration after installation.)



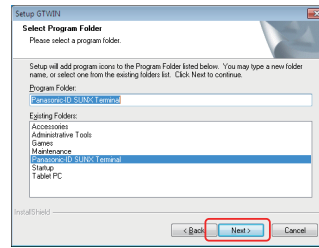
(7) The right screen is displayed. For changing the destination folder, click [Browse] and select a folder. Click "Next" to continue the installation without change.



Note)

This screen is not displayed in the case of overwrite install.

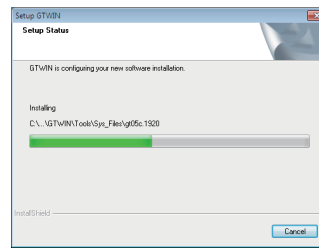
(8) The right screen is displayed. If you want to change the destination program folder, select a desired program folder. Click "Next" to continue the installation without change.



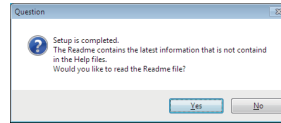
Note)

This screen is not displayed in the case of overwrite install.

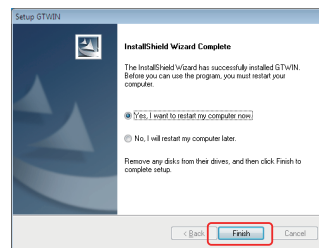
(9) The right screen is displayed. The installation process begins.



(10) The right screen is displayed during the installation. Click [Yes] to confirm the content. Click [No] to continue to the next step without confirmation. (This content will be installed as a file "ReadmeEnu.txt". So you can confirm it later.)



(11) The right screen is displayed. Click [Finish] and reboot the computer.



The installation is complete.

Note:

When installing on Windows 2000, a USB driver is not automatically recognized. By turning on the power supply of GT and connecting the GT to a PC with a USB cable, a dialog for specifying the location of the driver appears. Specify the following folder.

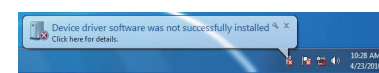
Folder to be specified:
 ¥Program Files¥Panasonic-ID SUNX Terminal¥GTWIN¥GTWIN_USB¥x86
 For 64-bit edition of Windows, specify the following folder.
 ¥Program Files (x86)¥Panasonic-ID SUNX Terminal¥GTWIN¥GTWIN_USB¥x64

Procedure of Installing USB Driver [When installing on Windows(R) 7, 8]

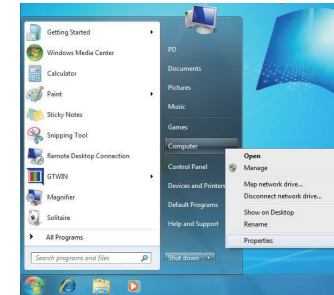
(1) Turn on the power supply of GT, and connect the GT and a PC with a USB cable.



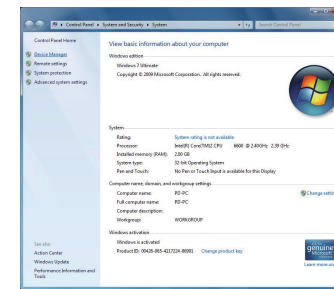
(2) The error message as below is displayed at the bottom right of the screen after the connection. Continue the installation procedure.



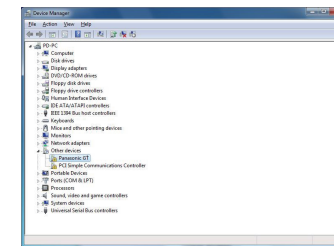
(3) Access to Properties of your computer. Click [Start], select [Computer] and right-click [Properties].



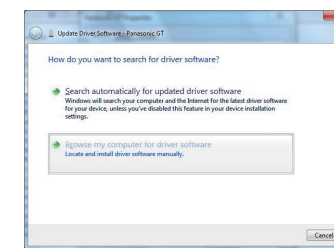
(4) Control Panel Home is displayed. Click "Device Manager" in the upper left part of the window.



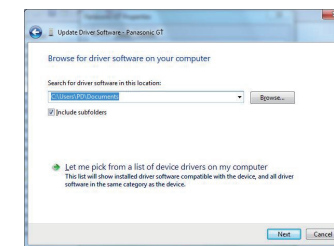
(5) Device Manager is displayed. Right-click "Panasonic GT" under [Other devices], and click [Update Driver].



(6) Update Driver Software - Panasonic GT is displayed. Select "Browse my computer for driver software".

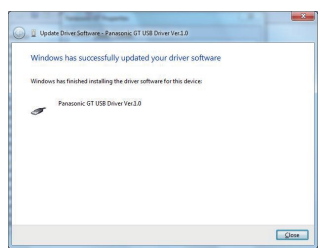


(7) Confirm the place to search the driver. Press [Browse], and specify the following folder. Click [Next].



Folder to be specified:
 \Program Files\Panasonic-ID SUNX Terminal\GTWIN\GTWIN_USB\x86
 For 64-bit edition of Windows, specify the following folder.
 \Program Files (x86)\Panasonic-ID SUNX Terminal\GTWIN\GTWIN_USB\x64

(8) The installation process begins. A message is displayed on the screen indicating that the installation completed. Click [Close] to close the screen. If a Windows security message is displayed during installation, click [Install this driver software anyway] or [Install].



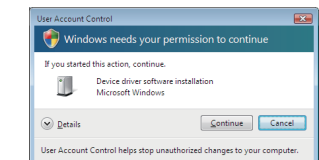
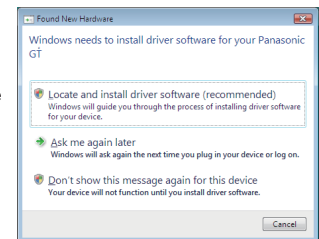
The installation of the USB driver has been completed.

[When installing on Windows Vista]

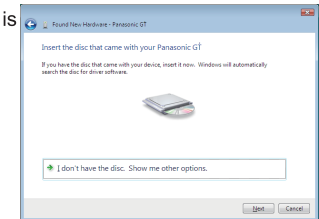
(1) Turn on the power supply of GT, and connect the GT and a PC with a USB cable.



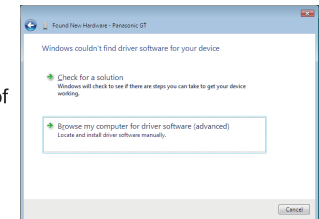
(2) As the PC detects the connection of USB automatically and displays a dialog prompting to install a driver software, select "Locate and install driver software (recommended)". If the User Account Control dialog is displayed, click "Continue".



(3) Found New Hardware - Panasonic GT is displayed. Select "I don't have the disc. Show me other options.".



(4) Select "Browse my computer for driver software".



After that, perform the steps (7) and (8) of [When installing on Windows(R) 7, 8].

Panasonic Industrial Devices SUNX Co., Ltd.

http://panasonic.net/id/pidsx/global
Overseas Sales Division (Head Office)
 2431-1 Ushiyama-cho, Kasugai-shi, Aichi, 486-0901, Japan
 Phone: +81-568-33-7861 FAX: +81-568-33-8591

[For our sales network, please visit our website.]

PRINTED IN JAPAN

© Panasonic Industrial Devices SUNX Co., Ltd. 2016

8A3 Q42 7000 1