

**Exclusive Nozzle for ER-VS Series**

**Conductive tube joint nozzle**

**ER-VAJT-64**

MJEC-ERVAJT64 No.0104-41V

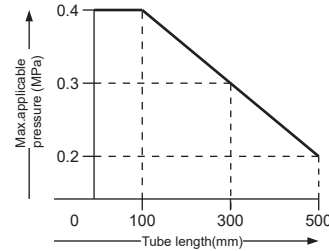
Thank you very much for purchasing Panasonic products. Read this Instruction Manual carefully and thoroughly for the correct and optimum use of this product. Kindly keep this manual in a convenient place for quick reference.

**1 OUTLINE**

- This product is the exclusive nozzle for the ultra-compact ionizer spot type (**ER-VS Series**).
- In order to use this product, the conductive tube (**ER-AT50**) (optional) is required.

**2 SPECIFICATIONS**

Designation	Conductive tube joint nozzle
Model No.	ER-VAJT-64
Air pressure range	0.02 MPa to 0.4 MPa (Max. applicable pressure depends on the tube length. Refer to the right figure)
Material	Stainless steel
Consumption air flow	20 to 100 /min. (ANR) (at applied pressure of 0.02 MPa to 0.4 MPa)
Accessories	Attachment (White): 1 pc., Insulating pipe: 1 pc.



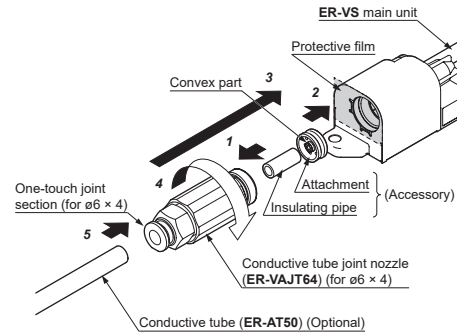
**3 MOUNTING**

- On the ultra-compact ionizer spot type (**ER-VS Series**), a protective film is affixed on the nozzle fitting part. Be sure to remove it before fitting the nozzle.
- The insulating pipe and the attachment are enclosed with the nozzle. Mount them as described below.

**Procedure**

1. Insert the insulating pipe into the center of the nozzle (**ER-VAJT-64**). (Note 1)
2. Direct the convex part of the center of the attachment towards you (see the right figure) and inserted it into **ER-VS** main unit.
3. In the state of 1, insert them into the nozzle fitting part of **ER-VS** main unit. (Note 1)
4. Mount the nozzle into the nozzle fitting part of **ER-VS** main unit. The tightening torque should be 6 N·m or less.
5. Insert the conductive tube (**ER-AT50**) (optional) into the one-touch joint section of the nozzle. (Note 2)

- Notes: 1) Be sure to fit the insulating pipe and the attachment. When they are not fitted, the static removal efficiency deteriorates considerably.  
2) After connecting the conductive tube, pull it toward you to make sure it does not detach. If the tube disconnects, pull the one-touch joint section toward you and reconnect the tube securely. After the reconnection, pull the tube toward you again to confirm that it does not disconnect.



**4 CAUTIONS**

- This product has been developed / produced for industrial use only.
- Use the product by the air pressure according to the tube length.
- The static removal efficiency depends upon the air pressure value. Use the product by the appropriate air pressure.
- The longer the conductive tube (**ER-AT50**), the less effective the static removal efficiency. Cut off the tube at the desired length to meet your conditions for use.
- Use an attachment suitable for nozzle.
- The conductive tube (**ER-AT50**) is consumables. Replace it when fading or cracking etc. due to deterioration is found.

**5 OPTIONAL**

• **Conductive tube**

Model No.	<b>ER-AT50</b>
Length	500 mm (cuttable at desired length)
Outer diameter × inner diameter	Φ6×4 mm
Minimum bending radius	15 mm
Material	Urethane

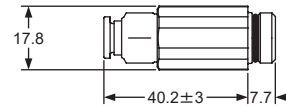
• **Conductive tube holder**

Model No.	<b>ER-ATH</b>
Description	This is used for fixing the tip of the conductive tube ( <b>ER-AT50</b> ).

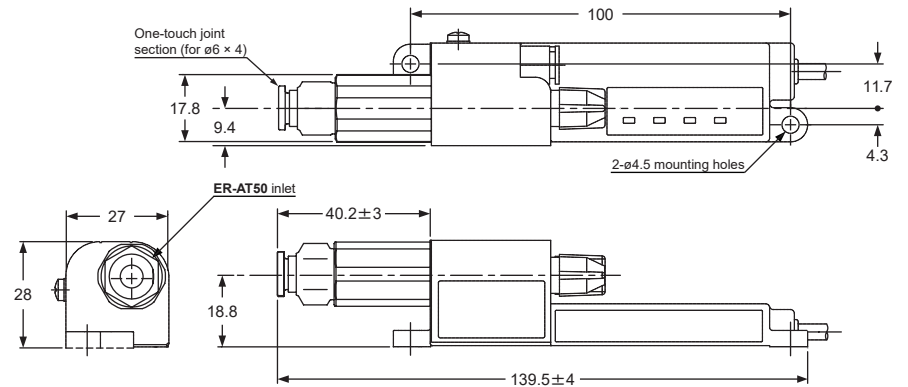
Note: For details, refer to the instruction manual enclosed with the conductive tube holder.

**6 DIMENSIONS (Unit: mm)**

• **ER-VAJT-64**



• **Mounting drawing with ER-VS main unit**



**Panasonic Industry Co., Ltd.**

1006, Oaza Kadoma, Kadoma-shi, Osaka 571-8506, Japan  
<https://industry.panasonic.com/>

Please visit our website for inquiries and about our sales network.

Panasonic Industry Co., Ltd. 2024  
 April, 2024

PRINTED IN JAPAN