

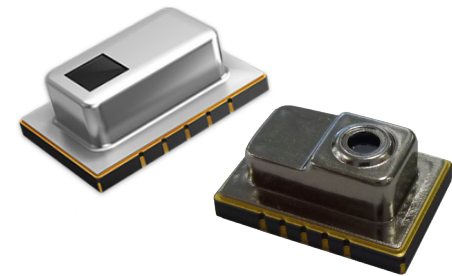
IN Your Future

IR Thermopile Array Sensor - Grid-EYE

AMG88**

Wide Angle 64-pixel Infrared Array Temperature Sensor

Panasonic, a worldwide leader in Sensor technology, is pleased to announce the latest Grid-EYE® Wide Angle Type Infrared Array Sensor. This new 90-Degree Grid-EYE Sensor is 8x8, 64-pixel, and offers digital output I2C external interface for thermal presence, direction, and temperature values. A built-in lens includes an improved 90-degree viewing angle and features a compact SMD design using MEMS thermopile technology. Available in two operating voltage options of 3.3V and 5V.



Key Features

- Low-cost surface mount components
- Small package (11.6mm x 8mm x 4.3mm)
- Package with 64 Thermopile MEMS pixels in 8x8 matrix
- Panasonic's custom ASIC to handle core sensor functions
- Integrated lens with different FoV's: 36°, 60° and 90°
- Simple digital readout of temperature data over I2C interface
- Selectable frame-rate on the readout: 1Hz or 10Hz
- People tracking & counting algorithms for privacy enabled detection



Smart Buildings

- Human presence detection
- Air conditioner control
- Lighting control



Smart Home

- Human health detection
- Presence detection
- Energy control



Temperature Detection

- Kitching alarm
- Microwave control
- Critters detection

[Click here for more information](#)

grideye@eu.panasonic.com

Panasonic
INDUSTRY

Your Committed Enabler