

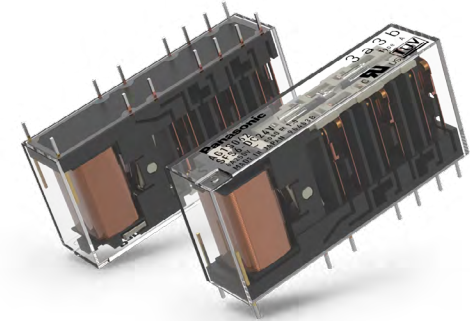
IN Your Future

Slim 6A Safety Relay

SFS Series

Slim in design, safe for man and machine

Thanks to its forcibly-guided contact structure, the SFS relay ensures that subsequent operations will be shut down and/or set into a safe state in case of the SFS relay suffering an overload – or from any other circuit abnormalities. This effectively prevents technical defects and thus ensures the safety of man and machine. Additional plus: The relay's slim design only takes little mounting space on the PCB and thereby suits the requirements of modern and minimalistic product designs.



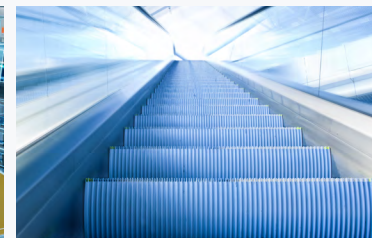
Key Features

- Forcibly-guided contacts according to EN 61810-3, Type A
- 4-pole version: 2 NO / 2 NC or 3 NO and 1 NC contacts
- 6-pole version: 4 NO / 2 NC, 5 NO and 1 NC or 3 NC and 3 NO contacts
- Optional LED to indicate operating position
- Optional integrated free wheeling diode
- Sockets for PC boards or DIN-rail mounting available
- Up to 85°C ambient temperature
- VDE approval according to DIN EN 60947-5-1 available
- Minimized needed PCB area



Industrial Automation

- Safety modules / safety PLCs
- AGV (automated guided vehicle)
- Emergency stop



Building Automation

- Gate / Door control
- Elevator control
- Emergency rescue



Transportation

- Signaling
- Axle counting
- For applications outside the train



For further information, please contact relays@eu.panasonic.com

Panasonic
INDUSTRY

Your Committed Enabler