

CONDUCTIVE POLYMER HYBRID ALUMINUM ELECTROLYTIC CAPACITORS

Panasonic
INDUSTRY

ZS / ZSU-SERIES: LAUNCHED TO CATER DEMANDING AUTOMOTIVE APPLICATIONS

ZS / ZSU-series Added Value

- Highest capacitance in class: 100 to 1000 μ F
- Ripple current ratings up to 4 Arms
- ESR as low as 11m Ω
- Temperature range: -55°C to 125°C
- Size: \varnothing 10 x 16.5mm, \varnothing 10 x 12.5mm



Size/Specifications		Rated Voltage			
		25V	35V	50V	63V
\varnothing 10 x 12.5	Cap. [μ F]	470 (ZS) / 680 (ZSU)	330 (ZS) / 470 (ZSU)	150 (ZS) / 180 (ZSU)	100 (ZS) / 120 (ZSU)
	ESR [m Ω]	14	14	17	19
	Ripple [mA] @125°C	3,500	3,500	3,200	3,000
\varnothing 10 x 16.5	Cap. [μ F]	560 (ZS) / 1000 (ZSU)	470 (ZS) / 680 (ZSU)	220 (ZS) / 270 (ZSU)	150 (ZS) / 180 (ZSU)
	ESR [m Ω]	11	11	13	15
	Ripple [mA] @125°C	4,000	4,000	3,700	3,500

CONDUCTIVE POLYMER HYBRID ALUMINUM ELECTROLYTIC CAPACITORS

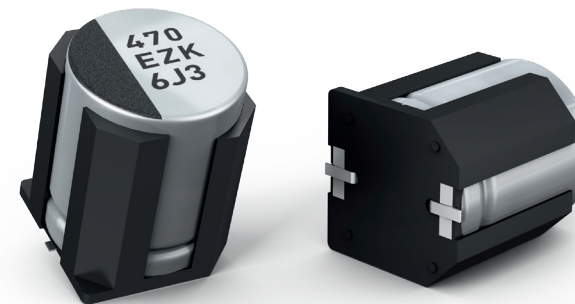
Panasonic
INDUSTRY

PRODUCT LINE-UP OF HYBRID CAPACITOR

	ZA	ZC	ZK	ZKU	ZT <small>NEW</small>	ZS	ZSU <small>NEW</small>	ZU <small>NEW</small>	ZE	ZF
Endurance	105°C 10,000h	125°C 4,000h	125°C 4,000h	125°C 4,000h	125°C 4,000h	125°C 4,000h	125°C 4,000h	125°C 4000h (135°C 4000h)	145°C 2,000h	150°C 1,000h
Rated Voltage [V DC]	25 – 80	25 – 80	25 – 35	25 – 35	25 – 63	25 – 63	25 – 63	25 – 63	25 – 63	25 – 63
Rated Capacitance [μ F]	10 – 330	10 – 330	33 – 470	39 – 560	33-330	150 – 560	120-1000	100-560	33 – 330	33 – 270
E S R [m Ω]	20 – 120	20 – 120	20 – 100	20 – 100	16-32	11 – 19	11 – 19	08 – 12	20 – 40	20 – 40
Ripple Current [Arms@Peak Temperature]	0.75 – 2.5	0.5 – 2	0.75 – 2.8	0.75 - 2.8	2.4-3.5	3.0-4.0	3.0-4.0	4.6-5.8 (3.2-4.0)	0.6 – 0.9	0.65 – 1
Leakage Current	0.01 CV									
Damp Heat	85°C 85% RH 2,000 h									

Anti-vibration SMD Capacitors

Specification	
Acceleration	294m/S ² (30G)
Frequency [Hz]	5~2000
Amplitude [mm]	max. 5 (peak to peak)
Direction and Duration of Vibration	X, Y, Z axes for 2 hours each



Panasonic Industry Europe GmbH
capacitor@eu.panasonic.com
industry.panasonic.eu

For complete and current
 Panasonic capacitor portfolio,
 please also visit industrial.panasonic.com