

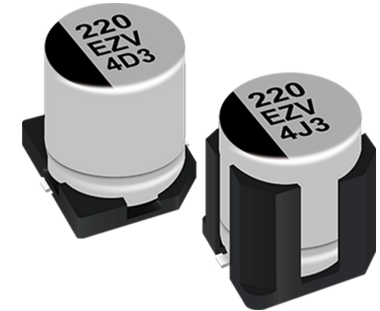
IN Your Future

Hybrid Capacitor

ZV series

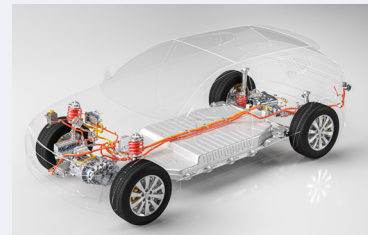
Market leading capacitor for higher ripple current and lower ESR

Panasonic Hybrid capacitor ZV series (SMD, high temp. reflow) is AEC-Q200 compliant with higher ripple current and lower ESR, catering to diverse applications. ZV achieved a maximum ripple current (3.3~4.6Arms) approximately 50% higher than comparable case-sizes from competitors. ZV series offers low ESR of 12 mΩ at 35V, while comparable capacitors usually come up with an ESR of around 16mΩ at 35V. By providing higher ripple current and lower ESR in small case size, ZV series enables to minimize the application design. The ZV series finds its applications in various "under the hood" scenarios, including water pumps, oil pumps, cooling fans, high-current DC/DC converters, and ADAS applications. It is also suitable for use in inverter power supplies for robotics, cooling fans, solar power systems, and more, covering the DC side of both inverter and rectifier circuits.



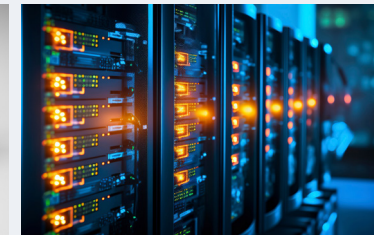
Key Features

- Reducing total number of parts and saving space
- Rated voltage of 25 to 63VDC
- Endurance rating with double spec of 125°C 4000h and 135°C 4000h
- AEC-Q200 compliant
- Higher ripple current up to 4.6A (at 125°C)
- Low ESR, down to 12mΩ
- Temperature range of -55 to 135 °C
- Capacitance 33 to 330μF
- Size (diameter x height) : 8x10.2 & 10x10.5mm
- 30G vibration-proof parts available



Automotive

- Pump
- E-Compressor
- ECU
- ADAS
- Cooling fan



Communication Infrastructure

- DC/DC converters
- AC/DC converters



Power Supply

- DC side of inverter circuit
- DC side of rectifier circuit

[Click here for more information](#)

[For more details, please contact capacitor@eu.panasonic.com](mailto:capacitor@eu.panasonic.com)

Panasonic
INDUSTRY

Your Committed Enabler