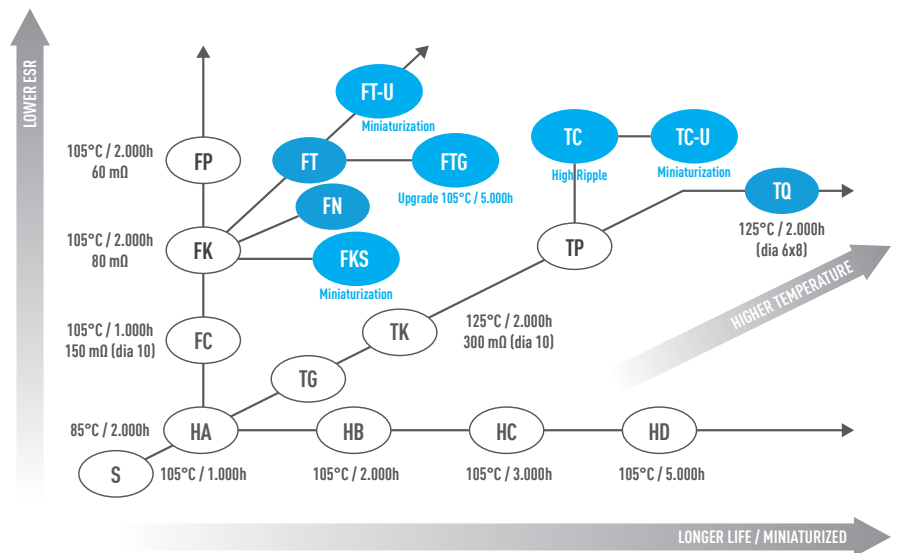
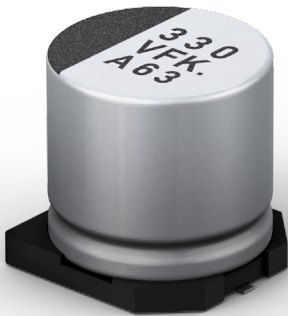


SMD Lytic Capacitor V Chip

1. Key point

- High reliability, long life, low ESR and high ripple current of the top-class in aluminium electrolytic capacitor
- Vibration-proof product is available upon request (φ6.3mm and larger)
- RoHS directive (2011/65/EU) and Pb free reflow soldering compliant

2. Line-up



3. Applications

AUTOMOTIVE

- Engine ECU
- Body ECU
- Blower motor
- BMS
- 48V-ISG
- EPS
- LED headlight
- Electric pump



BASE STATION

- Small cell
- Server
- Router
- Switches



INDUSTRIAL

- EV station
- Smart meter
- Security camera
- Solar power



SMD Lytic Capacitor V Chip

4. Features

- Low ESR and high Capacitance
- AEC-Q200 compliant
- Vibration-proof product is available upon request. ($\phi 6.3$ mm and larger)
- RoHS directive compliant

	FKS	FKS Medium-size	NEW FN	FT	UPGRADE FT-U	UPGRADE FT-G
Size	$\phi 4 \times 5.8 \sim \phi 10 \times 10.2$ mm	$\phi 12.5 \times 13.5 \sim \phi 18 \times 21.5$ mm	$\phi 4 \times 5.8 \sim \phi 10 \times 10.2$ mm	$\phi 4 \times 5.8 \sim \phi 10 \times 10.2$ mm	$\phi 4 \times 5.8 \sim \phi 10 \times 10.2$ mm	$\phi 8 \times 10.2 \sim \phi 10 \times 10.2$ mm
Temperature range	-55°C to 105°C	-55°C to 105°C	-55°C to 105°C	-55°C to 105°C	-55°C to 105°C	-55°C to 105°C
Rated voltage	6.3 – 50 V DC	6.3 – 35 V DC	6.3 – 100 V DC	6.3 – 50 V DC	16 – 50 V DC	6.3 – 50 V DC
Capacitance	10 – 1800 μ F	750 -13000 μ F	10 - 1800 μ F	10 – 2200 μ F	10 – 1200 μ F	220 – 2200 μ F
Endurance	105 °C 2000 h	105 °C 5000 h	105°C 2000h	105 °C 2000 h	105 °C 2000 h	105 °C 5000 h (6.3 V : 3000 h)
Ripple current (100KHz/max temp)	60 – 850 mA _{RMS}	1100 – 2640 mA _{RMS}	60 - 850 mA _{RMS}	160 – 1190 mA _{RMS}	85 – 1190 mA _{RMS}	670 – 1190 mA _{RMS}
ESR	0.08 – 3.5 Ω	0.025 – 0.06 Ω	0.08 - 3.5 Ω	0.06 – 0.88 Ω	0.06 - 2.3 Ω	0.06 – 0.12 Ω



5. Features

- Endurance: 2000 ~ 3000 h at 125 °C
- ESR after endurance: Guarantee after 2000 h at -40 °C
- AEC-Q200 compliant
- Vibration-proof product is available upon request. ($\phi 6.3$ mm and larger)
- RoHS directive compliant

	TC	NEW TCU	TQ
Size	$\phi 6.3 \times 7.7 \sim \phi 10 \times 10.2$ mm	$\phi 8 \times 10.2 \sim \phi 10 \times 10.2$ mm	$\phi 6.3 \times 7.7$ mm
Temperature range	-40°C to 125°C	-40°C to 125°C	-40°C to 125°C
Rated voltage	10 – 35 V DC	10 – 35 V DCC	35 V DC
Capacitance	47 – 470 μ F	220 -680 μ F	47 – 100 μ F
Endurance	125 °C 3000 h ($\phi 6.3$: 2000 h)	125 °C 3000 h	125 °C 2000 h
Ripple current (100KHz/max temp)	300 – 750 mA _{RMS}	410 – 750 mA _{RMS}	197 mA _{RMS}
ESR	0.15 – 0.45 Ω	0.15 – 0.20 Ω	0.30 Ω

